

# House District 10 | Rep. Judd Strom

HD 10 had **37,164** people when it was redistricted in 2011. The target population at that time was **37,142** people per House District.

Now it has an estimated **36,748** people, according to the latest numbers from the American Community Survey, a program of the U.S. Census Bureau.

The current estimate is **-2,191** away from the estimated district target of **38,939** people, which is determined by dividing our estimated statewide population (3,932,870) by the 101 House Districts.

The district's population has changed an estimated **-1.12%** between 2010 and now.

- 81% of the district is White, alone or in combination with one or more other races.
- 3.5% of the district is Black or African American, alone or in combination with one or more other races.
- 20.4% of the district is American Indian and Alaskan Native, alone or in combination with one or more other races.
- 1.7% of the district is Asian, alone or in combination with one or more other races.
- 0.1% of the district is Native Hawaiian and Other Pacific Islander, alone or in combination with one or more other races.
- 1.9% of the district is some other race.
- 5.8% of the district is of Hispanic or Latino origin.

## Congressional Districts

1, 2, 3

## Senate Districts

10, 29

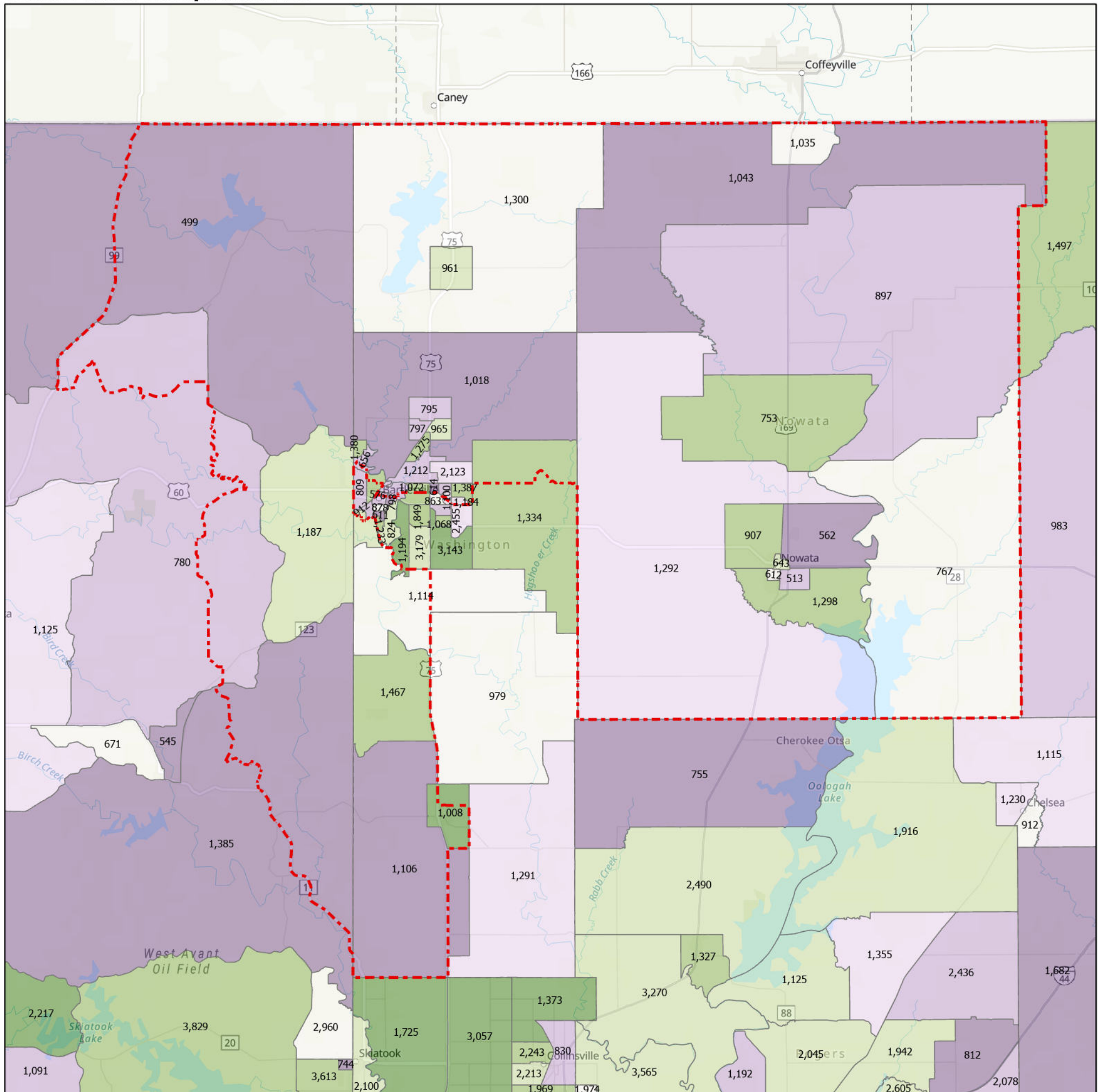
## Counties

Nowata, Osage, Washington

## Cities

Bartlesville, Copan, Delaware, Dewey, Lenapah, New Alluwe, Nowata, Ochelata, Ramona, Skiatook, South Coffeyville, Vera, Wann

## Census Block Groups in HD 10



**HD 10**

**Census Block Groups**  
(Label = 2019 population estimate)

Percent change, 2010-2019

More losses  More gains

Source: U.S. Census Bureau, 2015–2019 American Community Survey 5-Year Estimates. ACS data are based on a sample and are subject to sampling variability. Each estimate has a margin of error. The sum of the racial categories sometimes exceeds 100% because survey participants can select more than one racial category. Hispanic origin is of any race.