

House District 100 | Rep. Marilyn Stark

HD 100 had **37,460** people when it was redistricted in 2011. The target population at that time was **37,142** people per House District.

Now it has an estimated **40,790** people, according to the latest numbers from the American Community Survey, a program of the U.S. Census Bureau.

The current estimate is **1,851** away from the estimated district target of **38,939** people, which is determined by dividing our estimated statewide population (3,932,870) by the 101 House Districts.

The district's population has changed an estimated **8.89%** between 2010 and now.

69.6% of the district is White, alone or in combination with one or more other races.
20% of the district is Black or African American, alone or in combination with one or more other races.

4.4% of the district is American Indian and Alaskan Native, alone or in combination with one or more other races.

7.7% of the district is Asian, alone or in combination with one or more other races.

0.1% of the district is Native Hawaiian and Other Pacific Islander, alone or in combination with one or more other races.

3.7% of the district is some other race.

11.2% of the district is of Hispanic or Latino origin.

Congressional Districts

5

Senate Districts

30, 47

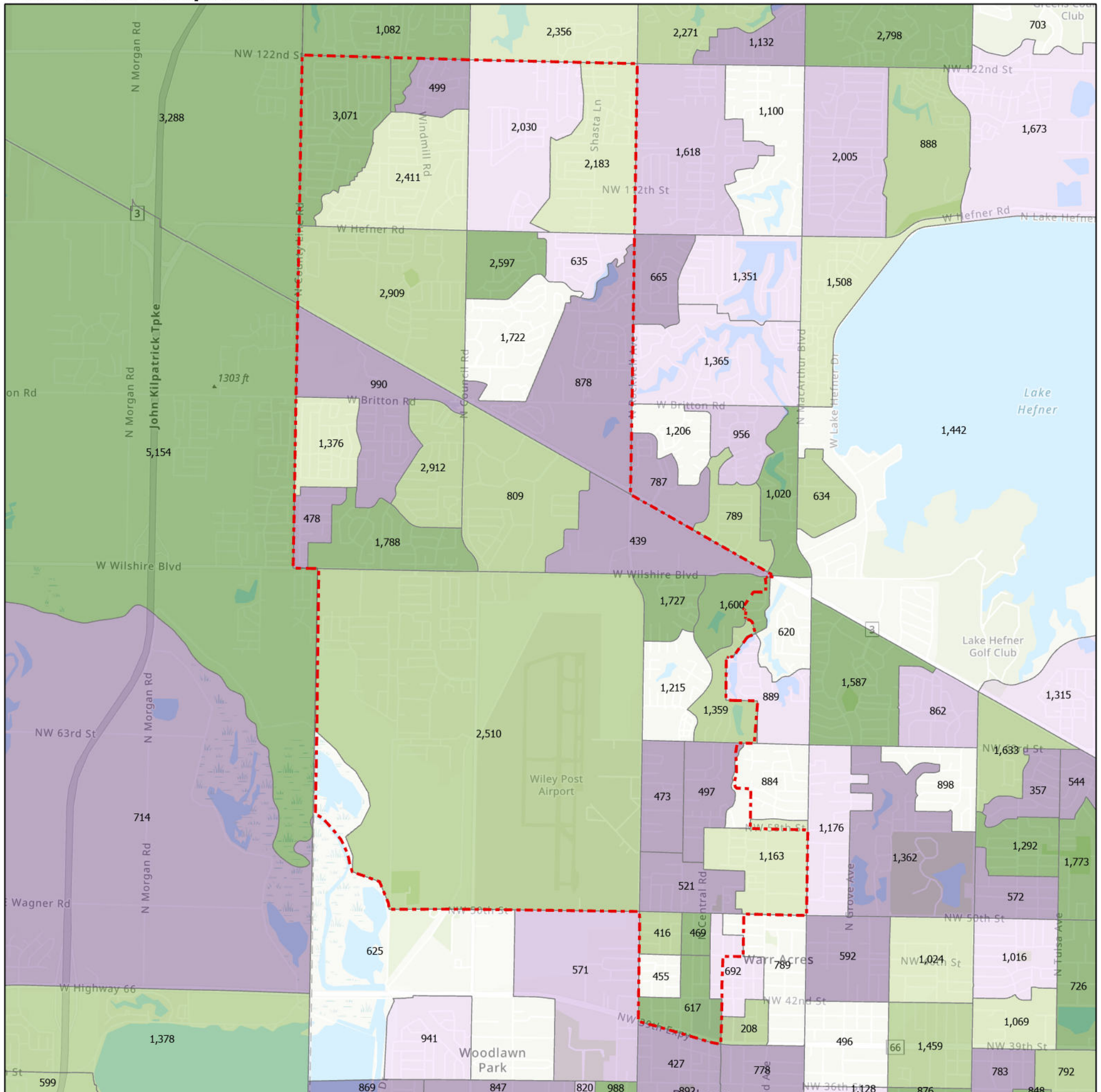
Counties

Oklahoma

Cities

Bethany, Oklahoma City, Warr Acres

Census Block Groups in HD 100

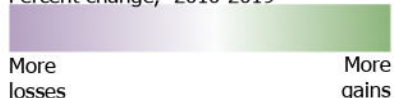


HD 100

Census Block Groups

(Label = 2019 population estimate)

Percent change, 2010-2019



12/31/2020

Source: U.S. Census Bureau, 2015–2019 American Community Survey 5-Year Estimates. ACS data are based on a sample and are subject to sampling variability. Each estimate has a margin of error. The sum of the racial categories sometimes exceeds 100% because survey participants can select more than one racial category. Hispanic origin is of any race.

