

# House District 14 | Rep. Chris Sneed

HD 14 had **36,971** people when it was redistricted in 2011. The target population at that time was **37,142** people per House District.

Now it has an estimated **35,771** people, according to the latest numbers from the American Community Survey, a program of the U.S. Census Bureau.

The current estimate is **-3,168** away from the estimated district target of **38,939** people, which is determined by dividing our estimated statewide population (3,932,870) by the 101 House Districts.

The district's population has changed an estimated **-3.25%** between 2010 and now.

- 67.5% of the district is White, alone or in combination with one or more other races.
- 6.5% of the district is Black or African American, alone or in combination with one or more other races.
- 30.2% of the district is American Indian and Alaskan Native, alone or in combination with one or more other races.
- 1% of the district is Asian, alone or in combination with one or more other races.
- 0% of the district is Native Hawaiian and Other Pacific Islander, alone or in combination with one or more other races.
- 4.5% of the district is some other race.
- 7.6% of the district is of Hispanic or Latino origin.

## Congressional Districts

2

## Senate Districts

8, 9, 18

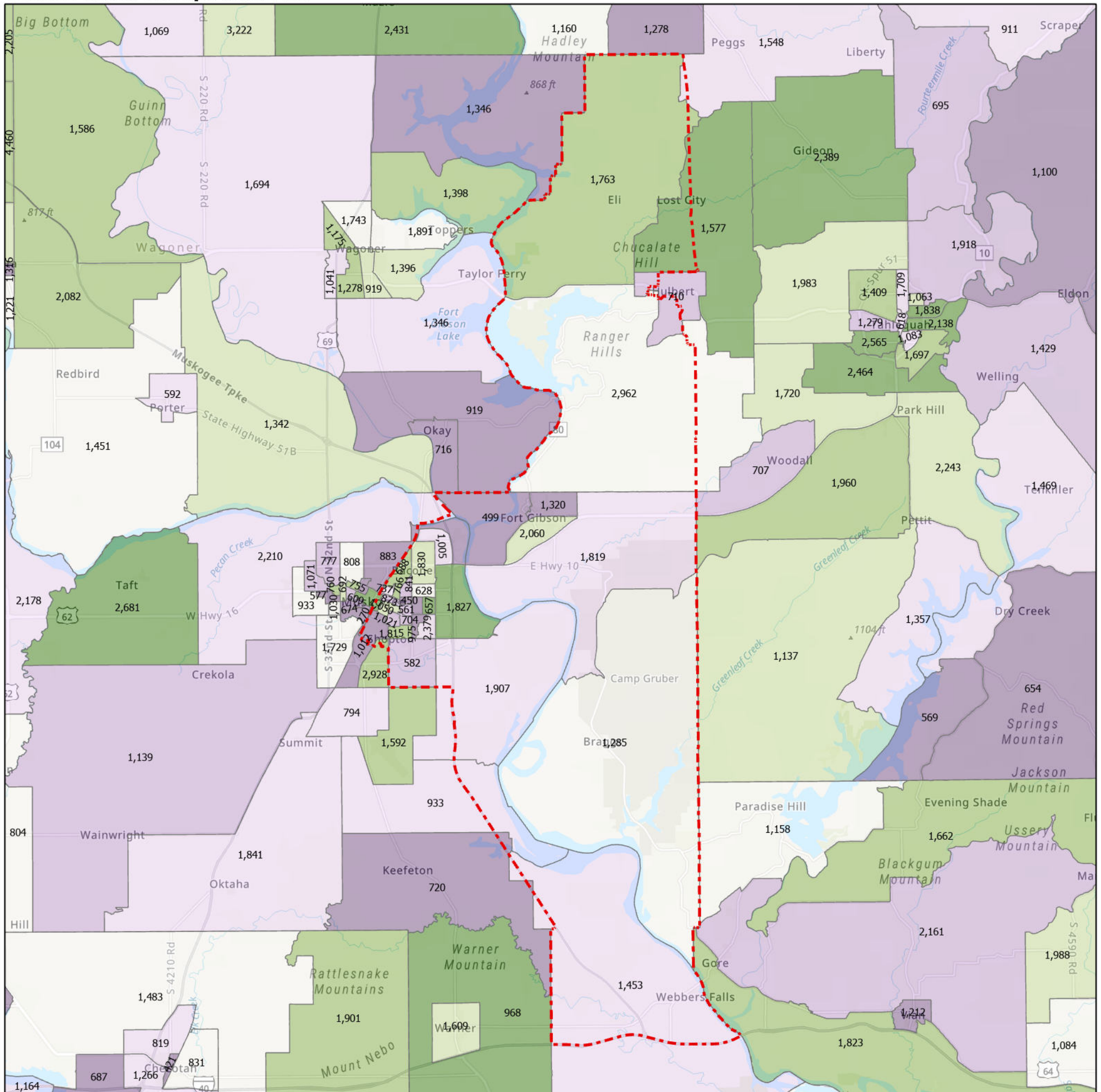
## Counties

Cherokee, Muskogee

## Cities

Braggs, Fort Gibson, Hulbert, Lost City, Muskogee, River Bottom, Sand Hill, Sour John, Webbers Falls

## Census Block Groups in HD 14



**HD 14**

**Census Block Groups**  
(Label = 2019 population estimate)

Percent change, 2010-2019

More losses  More gains

12/31/2020  
Source: U.S. Census Bureau, 2015–2019 American Community Survey 5-Year Estimates. ACS data are based on a sample and are subject to sampling variability. Each estimate has a margin of error. The sum of the racial categories sometimes exceeds 100% because survey participants can select more than one racial category. Hispanic origin is of any race.

