

# House District 19 | Rep. Justin JJ Humphrey

HD 19 had **37,248** people when it was redistricted in 2011. The target population at that time was **37,142** people per House District.

Now it has an estimated **36,097** people, according to the latest numbers from the American Community Survey, a program of the U.S. Census Bureau.

The current estimate is **-2,842** away from the estimated district target of **38,939** people, which is determined by dividing our estimated statewide population (3,932,870) by the 101 House Districts.

The district's population has changed an estimated **-3.09%** between 2010 and now.

77.6% of the district is White, alone or in combination with one or more other races.  
7.3% of the district is Black or African American, alone or in combination with one or more other races.

23.3% of the district is American Indian and Alaskan Native, alone or in combination with one or more other races.

0.3% of the district is Asian, alone or in combination with one or more other races.

0.2% of the district is Native Hawaiian and Other Pacific Islander, alone or in combination with one or more other races.

1% of the district is some other race.

4.2% of the district is of Hispanic or Latino origin.

## Congressional Districts

2

## Senate Districts

5, 6

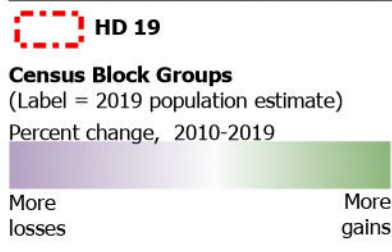
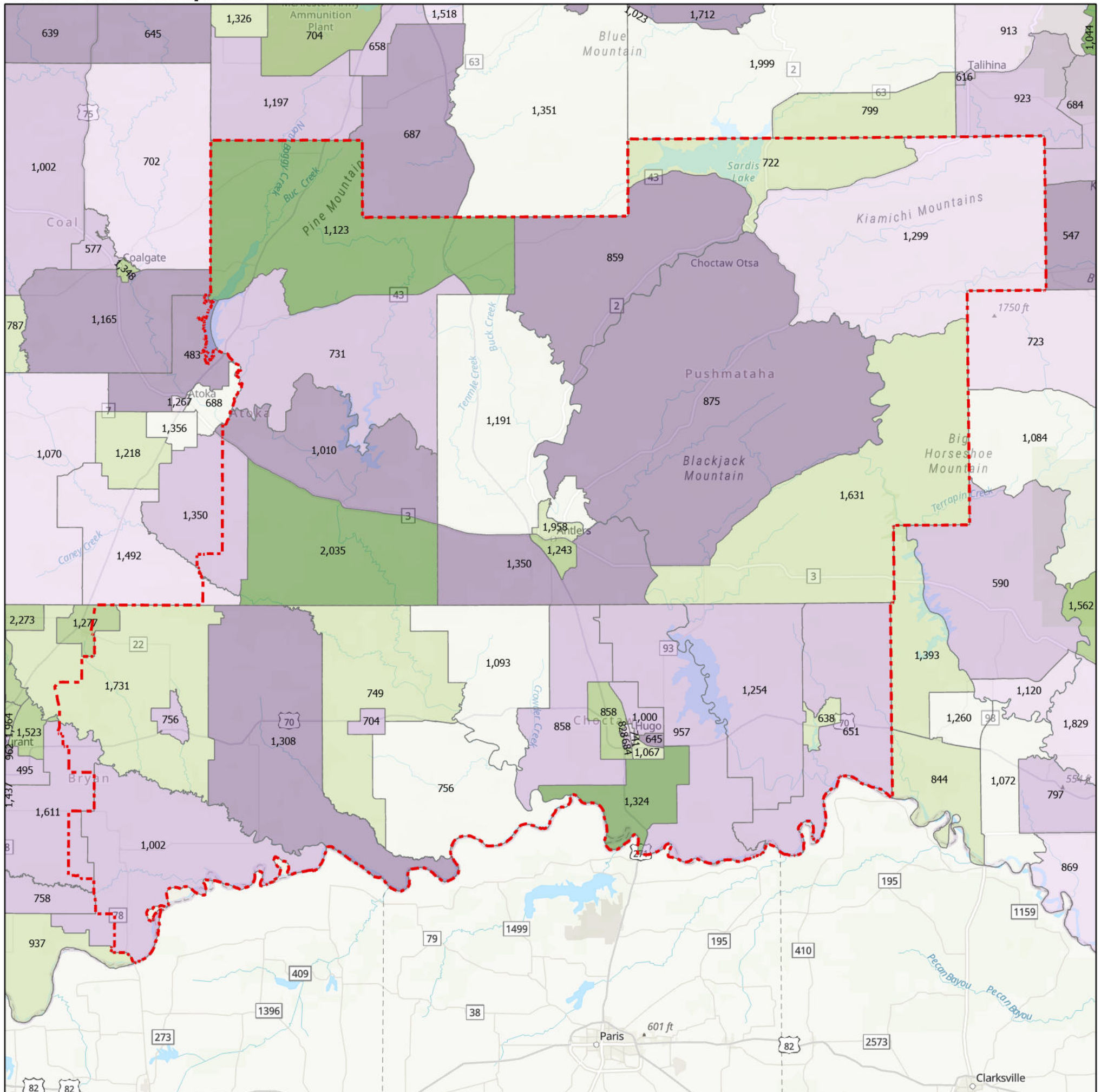
## Counties

Atoka, Bryan, Choctaw, Pushmataha

## Cities

Albany, Albion, Antlers, Bennington, Blue, Bokchito, Boswell, Caddo, Clayton, Fort Towson, Grant, Hugo, Lane, Rattan, Sawyer, Soper, Stringtown, Swink, Tuskahoma

## Census Block Groups in HD 19



12/31/2020  
Source: U.S. Census Bureau, 2015–2019 American Community Survey 5-Year Estimates. ACS data are based on a sample and are subject to sampling variability. Each estimate has a margin of error. The sum of the racial categories sometimes exceeds 100% because survey participants can select more than one racial category. Hispanic origin is of any race.

