

# House District 24 | Rep. Logan Phillips

HD 24 had **36,998** people when it was redistricted in 2011. The target population at that time was **37,142** people per House District.

Now it has an estimated **36,715** people, according to the latest numbers from the American Community Survey, a program of the U.S. Census Bureau.

The current estimate is **-2,224** away from the estimated district target of **38,939** people, which is determined by dividing our estimated statewide population (3,932,870) by the 101 House Districts.

The district's population has changed an estimated **-0.76%** between 2010 and now.

76.3% of the district is White, alone or in combination with one or more other races.  
7.7% of the district is Black or African American, alone or in combination with one or more other races.

24.8% of the district is American Indian and Alaskan Native, alone or in combination with one or more other races.

0.4% of the district is Asian, alone or in combination with one or more other races.

0.1% of the district is Native Hawaiian and Other Pacific Islander, alone or in combination with one or more other races.

1.3% of the district is some other race.

4.9% of the district is of Hispanic or Latino origin.

## Congressional Districts

2

## Senate Districts

7, 8, 13

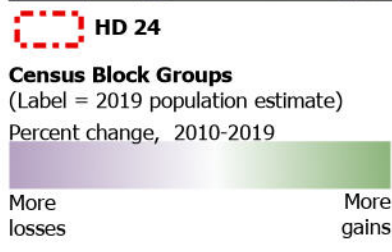
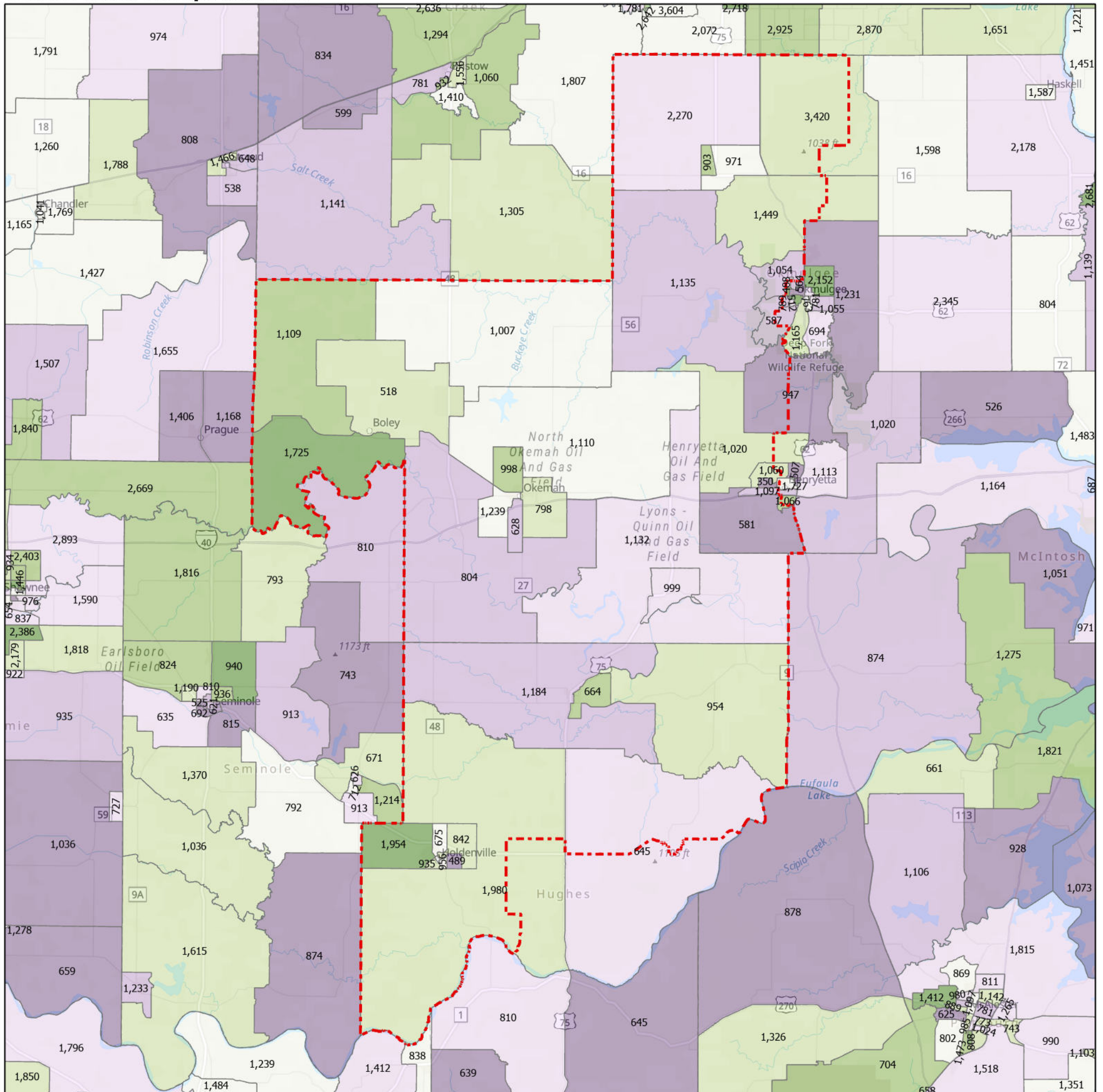
## Counties

Hughes, Okfuskee, Okmulgee

## Cities

Bearden, Beggs, Boley, Castle, Clearview, Dustin, Henryetta, Holdenville, Horntown, IXL, Lamar, Liberty, Okemah, Okmulgee, Paden, Spaulding, Weleetka, Wetumka, Winchester, Yeager

## Census Block Groups in HD 24



12/31/2020  
Source: U.S. Census Bureau, 2015–2019 American Community Survey 5-Year Estimates. ACS data are based on a sample and are subject to sampling variability. Each estimate has a margin of error. The sum of the racial categories sometimes exceeds 100% because survey participants can select more than one racial category. Hispanic origin is of any race.

