

# House District 27 | Rep. Danny Sterling

HD 27 had **37,085** people when it was redistricted in 2011. The target population at that time was **37,142** people per House District.

Now it has an estimated **37,466** people, according to the latest numbers from the American Community Survey, a program of the U.S. Census Bureau.

The current estimate is **-1,473** away from the estimated district target of **38,939** people, which is determined by dividing our estimated statewide population (3,932,870) by the 101 House Districts.

The district's population has changed an estimated **1.03%** between 2010 and now.

- 86% of the district is White, alone or in combination with one or more other races.
- 3.2% of the district is Black or African American, alone or in combination with one or more other races.
- 13.4% of the district is American Indian and Alaskan Native, alone or in combination with one or more other races.
- 1.5% of the district is Asian, alone or in combination with one or more other races.
- 0.4% of the district is Native Hawaiian and Other Pacific Islander, alone or in combination with one or more other races.
- 0.6% of the district is some other race.
- 4.5% of the district is of Hispanic or Latino origin.

## Congressional Districts

4, 5

## Senate Districts

13, 15, 24, 28

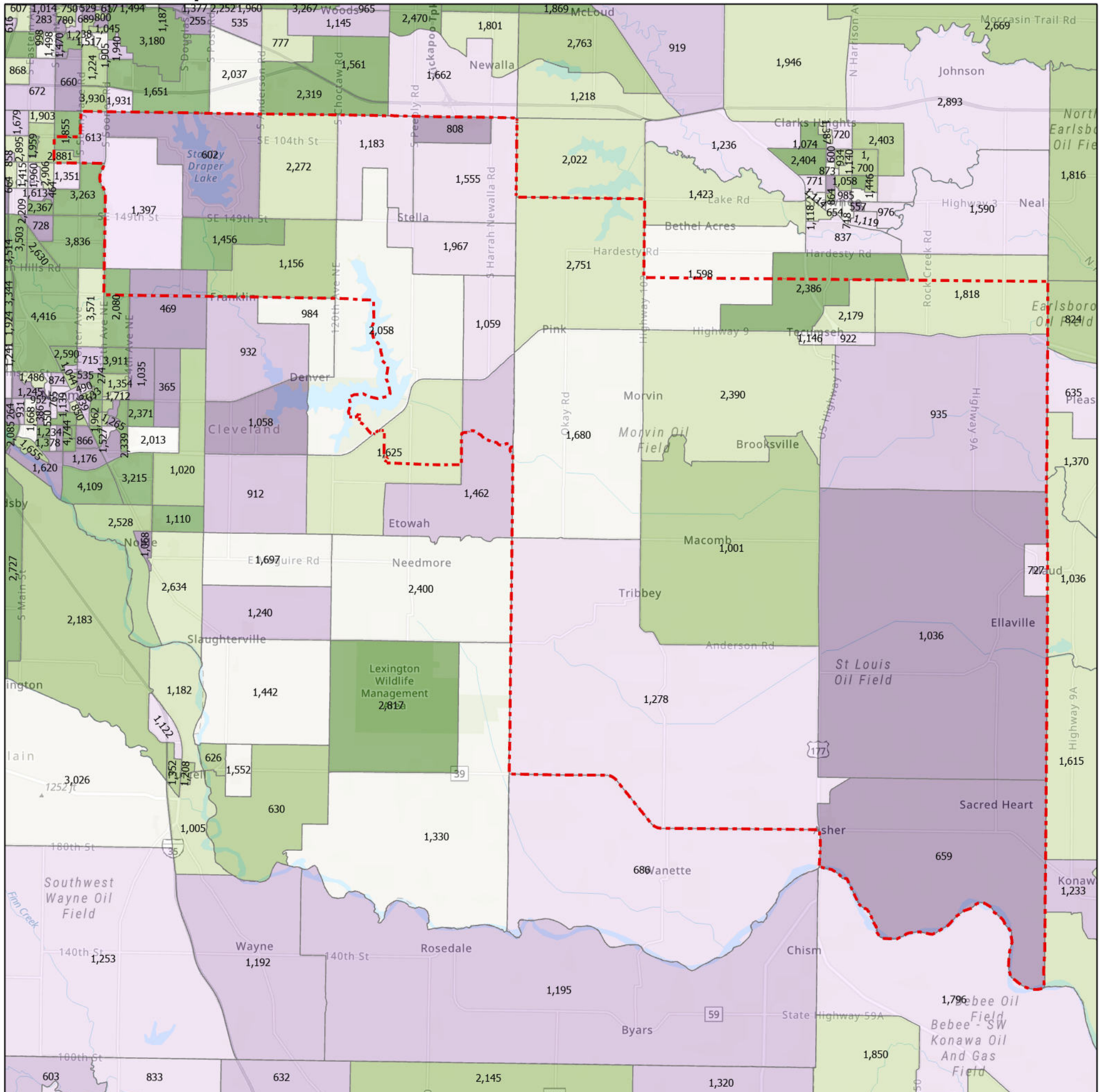
## Counties

Cleveland, Pottawatomie

## Cities

Asher, Bethel Acres, Brooksville, Earlsboro, Macomb, Maud, Moore, Norman, Oklahoma City, Pink, Shawnee, St. Louis, Tecumseh, Tribbey

## Census Block Groups in HD 27



**HD 27**

**Census Block Groups**  
(Label = 2019 population estimate)  
Percent change, 2010-2019

More gains (Green)

More losses (Purple)

12/31/2020  
Source: U.S. Census Bureau, 2015–2019 American Community Survey 5-Year Estimates. ACS data are based on a sample and are subject to sampling variability. Each estimate has a margin of error. The sum of the racial categories sometimes exceeds 100% because survey participants can select more than one racial category. Hispanic origin is of any race.

