

House District 33 | Rep. John Talley

HD 33 had **37,190** people when it was redistricted in 2011. The target population at that time was **37,142** people per House District.

Now it has an estimated **38,628** people, according to the latest numbers from the American Community Survey, a program of the U.S. Census Bureau.

The current estimate is **-311** away from the estimated district target of **38,939** people, which is determined by dividing our estimated statewide population (3,932,870) by the 101 House Districts.

The district's population has changed an estimated **3.87%** between 2010 and now.

- 87.8% of the district is White, alone or in combination with one or more other races.
- 4.8% of the district is Black or African American, alone or in combination with one or more other races.
- 8.8% of the district is American Indian and Alaskan Native, alone or in combination with one or more other races.
- 3.4% of the district is Asian, alone or in combination with one or more other races.
- 0.1% of the district is Native Hawaiian and Other Pacific Islander, alone or in combination with one or more other races.
- 0.9% of the district is some other race.
- 4.7% of the district is of Hispanic or Latino origin.

Congressional Districts

3

Senate Districts

20, 21

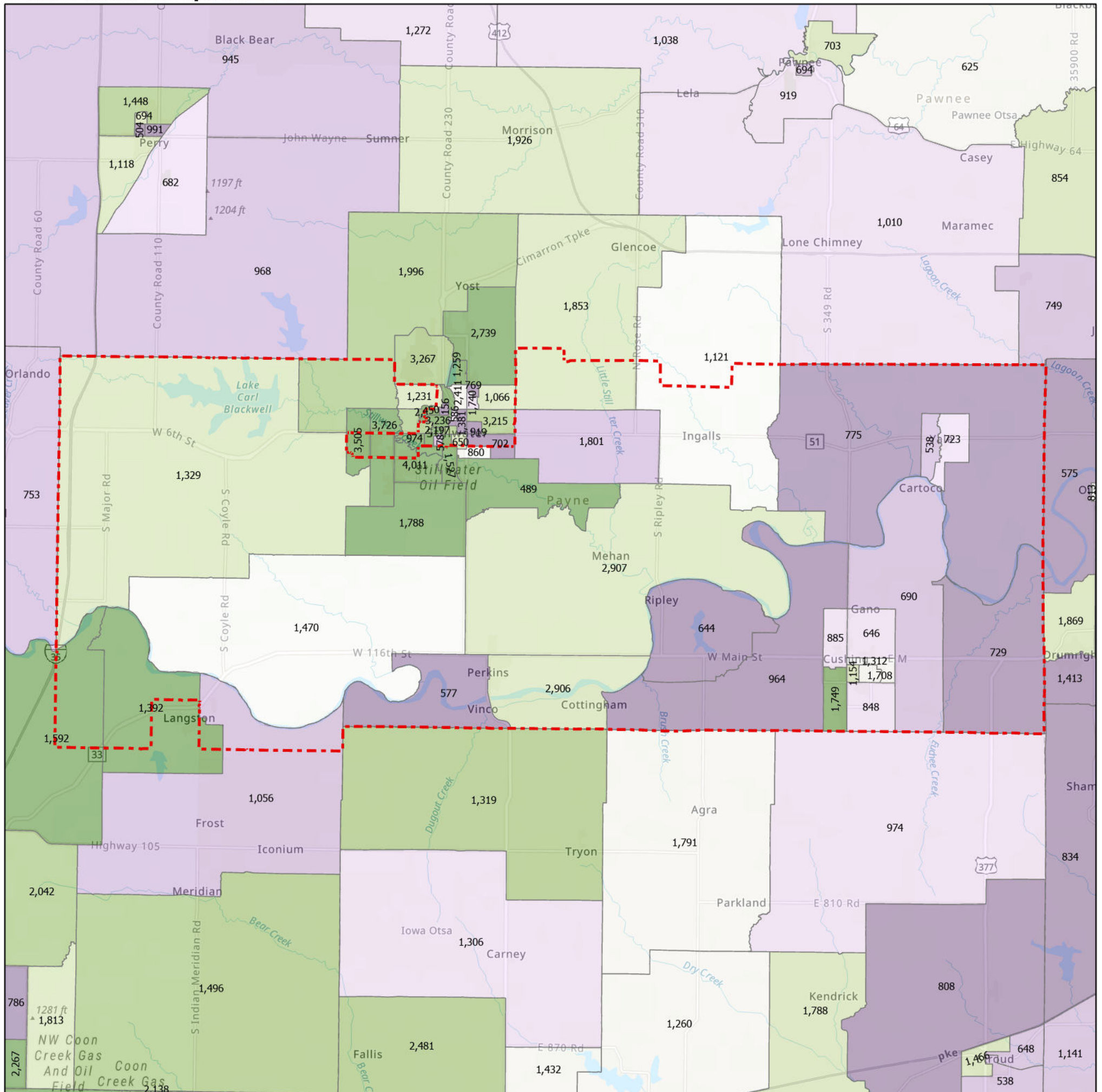
Counties

Logan, Payne

Cities

Coyle, Cushing, Drumright, Langston, Mulhall, Orlando, Perkins, Ripley, Stillwater, Yale

Census Block Groups in HD 33



HD 33

Census Block Groups
(Label = 2019 population estimate)

Percent change, 2010-2019



More losses

More gains

12/31/2020

Source: U.S. Census Bureau, 2015-2019 American Community Survey 5-Year Estimates. ACS data are based on a sample and are subject to sampling variability. Each estimate has a margin of error. The sum of the racial categories sometimes exceeds 100% because survey participants can select more than one racial category. Hispanic origin is of any race.

