

# House District 35 | Rep. Ty Burns

HD 35 had **37,009** people when it was redistricted in 2011. The target population at that time was **37,142** people per House District.

Now it has an estimated **36,813** people, according to the latest numbers from the American Community Survey, a program of the U.S. Census Bureau.

The current estimate is **-2,126** away from the estimated district target of **38,939** people, which is determined by dividing our estimated statewide population (3,932,870) by the 101 House Districts.

The district's population has changed an estimated **-0.53%** between 2010 and now.

- 89.8% of the district is White, alone or in combination with one or more other races.
- 1.5% of the district is Black or African American, alone or in combination with one or more other races.
- 14.2% of the district is American Indian and Alaskan Native, alone or in combination with one or more other races.
- 0.5% of the district is Asian, alone or in combination with one or more other races.
- 0% of the district is Native Hawaiian and Other Pacific Islander, alone or in combination with one or more other races.
- 0.6% of the district is some other race.
- 3.7% of the district is of Hispanic or Latino origin.

## Congressional Districts

3

## Senate Districts

10, 12, 20, 21

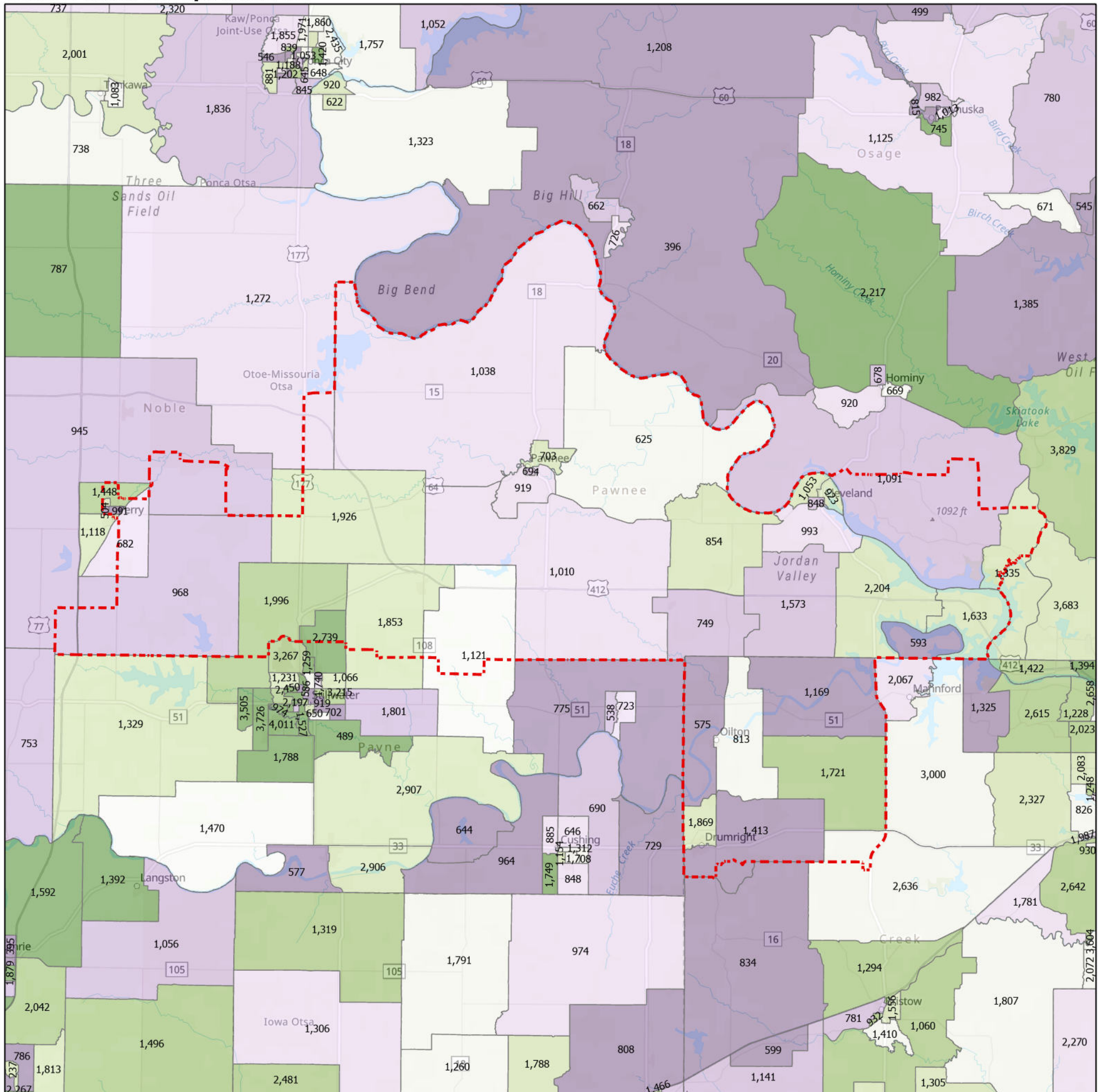
## Counties

Creek, Noble, Osage, Pawnee, Payne

## Cities

Blackburn, Cleveland, Drumright, Glencoe, Hallett, Jennings, Lawrence Creek, Mannford, Maramec, Morrison, Oak Grove, Oilton, Osage, Pawnee, Perry, Prue, Ralston, Skedee, Skiatook, Stillwater, Terlton, Westport

## Census Block Groups in HD 35



**HD 35**

**Census Block Groups**  
(Label = 2019 population estimate)  
Percent change, 2010-2019

More losses   More gains

12/31/2020  
Source: U.S. Census Bureau, 2015–2019 American Community Survey 5-Year Estimates. ACS data are based on a sample and are subject to sampling variability. Each estimate has a margin of error. The sum of the racial categories sometimes exceeds 100% because survey participants can select more than one racial category. Hispanic origin is of any race.

