

# House District 36 | Rep. Sean Roberts

**HD 36** had **37,022** people when it was redistricted in 2011. The target population at that time was **37,142** people per House District.

Now it has an estimated **40,594** people, according to the latest numbers from the American Community Survey, a program of the U.S. Census Bureau.

The current estimate is **1,655** away from the estimated district target of **38,939** people, which is determined by dividing our estimated statewide population (3,932,870) by the 101 House Districts.

The district's population has changed an estimated **9.65%** between 2010 and now.

81.7% of the district is White, alone or in combination with one or more other races.  
3.5% of the district is Black or African American, alone or in combination with one or more other races.

22.4% of the district is American Indian and Alaskan Native, alone or in combination with one or more other races.

1.3% of the district is Asian, alone or in combination with one or more other races.

0.1% of the district is Native Hawaiian and Other Pacific Islander, alone or in combination with one or more other races.

1.6% of the district is some other race.

3.6% of the district is of Hispanic or Latino origin.

## Congressional Districts

1, 3

## Senate Districts

10, 11, 34

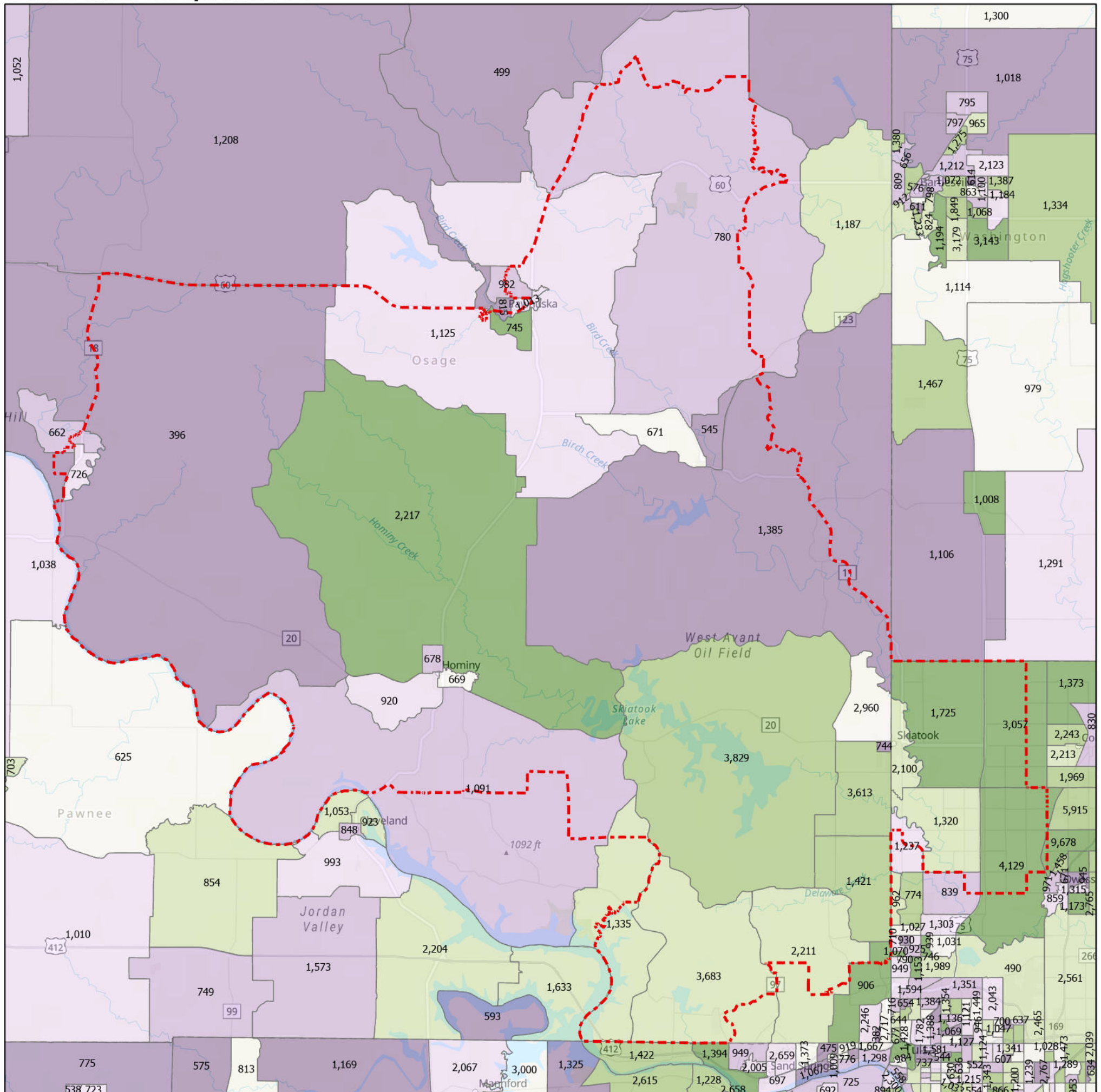
## Counties

Osage, Tulsa

## Cities

Avant, Barnsdall, Collinsville, Fairfax, Hominy, Owasso, Pawhuska, Sand Springs, Skiatook, Sperry, Tulsa, Wynona

## Census Block Groups in HD 36



**HD 36**  
**Census Block Groups**  
 (Label = 2019 population estimate)  
 Percent change, 2010-2019

More losses █ More gains

12/31/2020  
 Source: U.S. Census Bureau, 2015–2019 American Community Survey 5-Year Estimates. ACS data are based on a sample and are subject to sampling variability. Each estimate has a margin of error. The sum of the racial categories sometimes exceeds 100% because survey participants can select more than one racial category. Hispanic origin is of any race.

