

# House District 42 | Rep. Cynthia Roe

HD 42 had **36,881** people when it was redistricted in 2011. The target population at that time was **37,142** people per House District.

Now it has an estimated **39,222** people, according to the latest numbers from the American Community Survey, a program of the U.S. Census Bureau.

The current estimate is **283** away from the estimated district target of **38,939** people, which is determined by dividing our estimated statewide population (3,932,870) by the 101 House Districts.

The district's population has changed an estimated **6.35%** between 2010 and now.

90.6% of the district is White, alone or in combination with one or more other races.  
2.5% of the district is Black or African American, alone or in combination with one or more other races.

11.6% of the district is American Indian and Alaskan Native, alone or in combination with one or more other races.

1% of the district is Asian, alone or in combination with one or more other races.

0.2% of the district is Native Hawaiian and Other Pacific Islander, alone or in combination with one or more other races.

1.2% of the district is some other race.

9.3% of the district is of Hispanic or Latino origin.

## Congressional Districts

4

## Senate Districts

13, 43

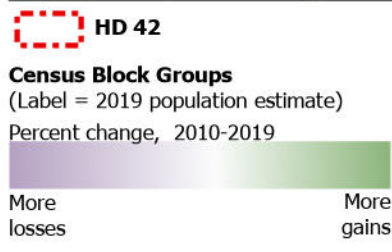
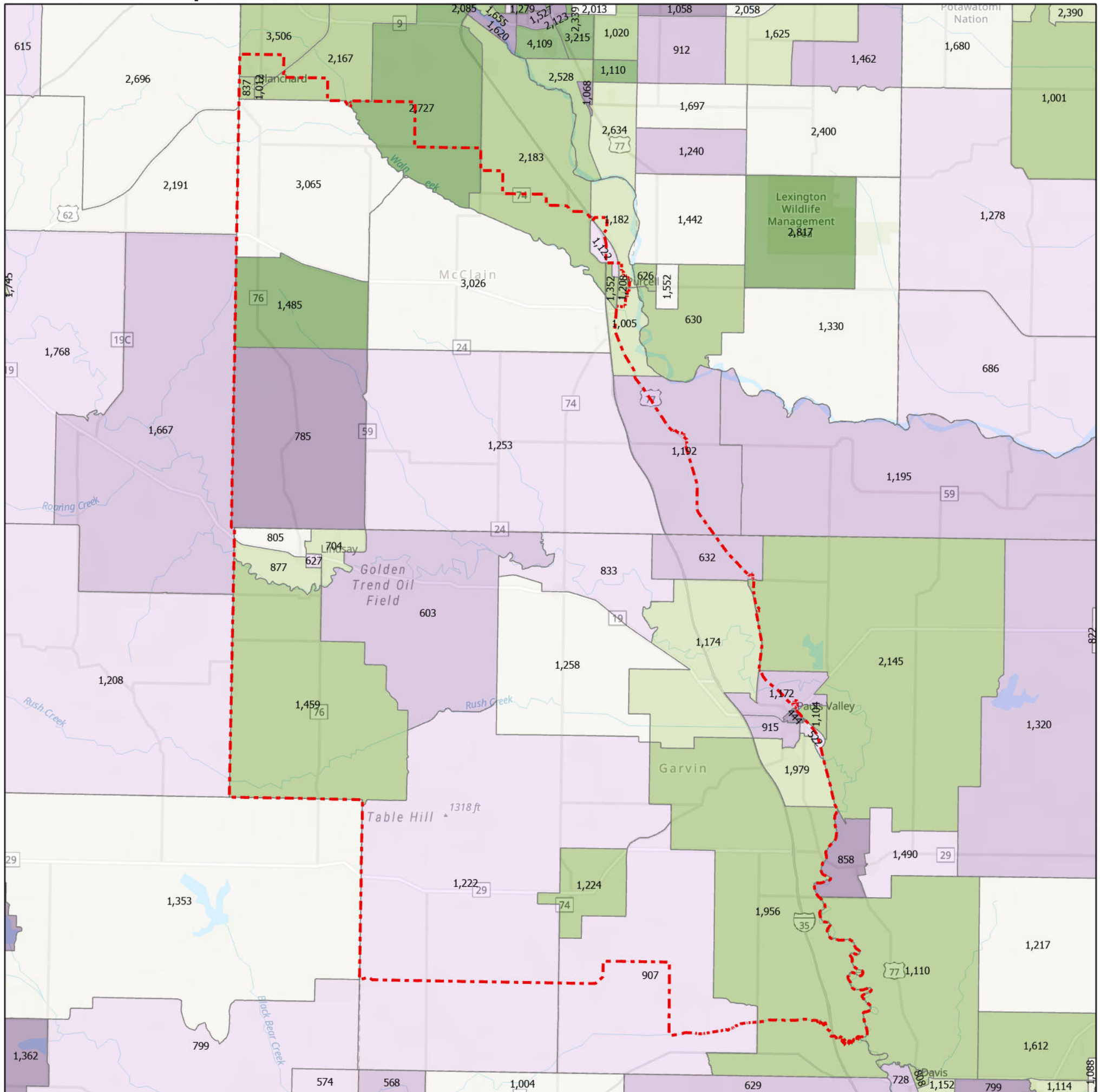
## Counties

Garvin, McClain

## Cities

Blanchard, Cole, Dibble, Elmore City, Erin Springs, Foster, Goldsby, Katie, Lindsay, Maysville, Paoli, Pauls Valley, Purcell, Washington, Wayne

## Census Block Groups in HD 42



12/31/2020  
Source: U.S. Census Bureau, 2015–2019 American Community Survey 5-Year Estimates. ACS data are based on a sample and are subject to sampling variability. Each estimate has a margin of error. The sum of the racial categories sometimes exceeds 100% because survey participants can select more than one racial category. Hispanic origin is of any race.

