

# House District 48 | Rep. Tammy Townley

HD 48 had **37,173** people when it was redistricted in 2011. The target population at that time was **37,142** people per House District.

Now it has an estimated **36,565** people, according to the latest numbers from the American Community Survey, a program of the U.S. Census Bureau.

The current estimate is **-2,374** away from the estimated district target of **38,939** people, which is determined by dividing our estimated statewide population (3,932,870) by the 101 House Districts.

The district's population has changed an estimated **-1.64%** between 2010 and now.

- 80.9% of the district is White, alone or in combination with one or more other races.
- 10.7% of the district is Black or African American, alone or in combination with one or more other races.
- 14% of the district is American Indian and Alaskan Native, alone or in combination with one or more other races.
- 1.9% of the district is Asian, alone or in combination with one or more other races.
- 0.1% of the district is Native Hawaiian and Other Pacific Islander, alone or in combination with one or more other races.
- 1.7% of the district is some other race.
- 8.6% of the district is of Hispanic or Latino origin.

## Congressional Districts

4

## Senate Districts

13, 14

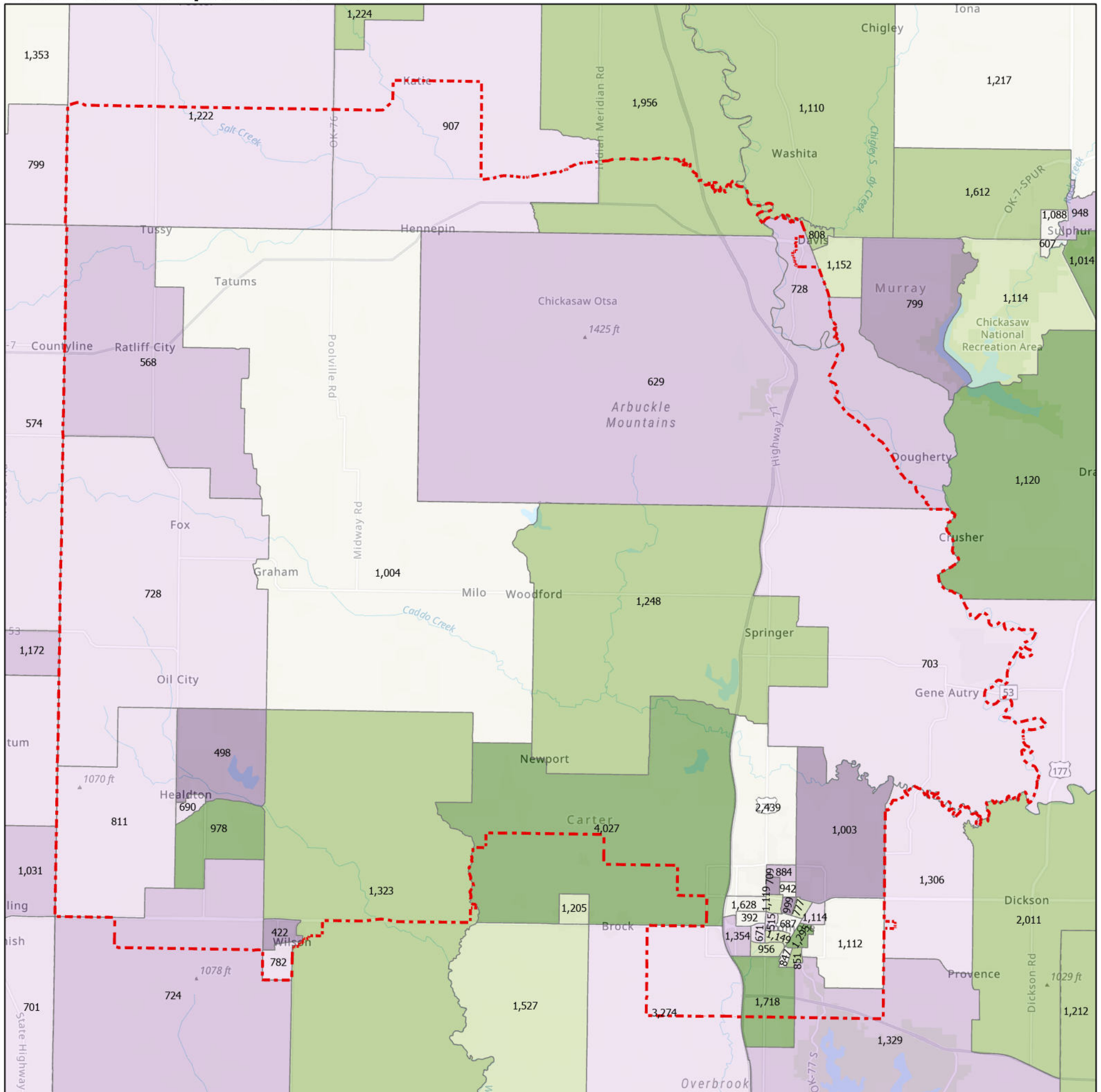
## Counties

Carter, Garvin, Murray

## Cities

Ardmore, Davis, Gene Autry, Healdton, Katie, Lone Grove, Ratliff City, Springer, Tatum, Wilson

## Census Block Groups in HD 48



**HD 48**

**Census Block Groups**  
(Label = 2019 population estimate)

Percent change, 2010-2019

More losses  More gains

12/31/2020

Source: U.S. Census Bureau, 2015–2019 American Community Survey 5-Year Estimates. ACS data are based on a sample and are subject to sampling variability. Each estimate has a margin of error. The sum of the racial categories sometimes exceeds 100% because survey participants can select more than one racial category. Hispanic origin is of any race.

