

House District 49 | Rep. Tommy C. Hardin

HD 49 had **37,210** people when it was redistricted in 2011. The target population at that time was **37,142** people per House District.

Now it has an estimated **39,557** people, according to the latest numbers from the American Community Survey, a program of the U.S. Census Bureau.

The current estimate is **618** away from the estimated district target of **38,939** people, which is determined by dividing our estimated statewide population (3,932,870) by the 101 House Districts.

The district's population has changed an estimated **6.31%** between 2010 and now.

- 84% of the district is White, alone or in combination with one or more other races.
- 2.8% of the district is Black or African American, alone or in combination with one or more other races.
- 14.5% of the district is American Indian and Alaskan Native, alone or in combination with one or more other races.
- 0.5% of the district is Asian, alone or in combination with one or more other races.
- 0.2% of the district is Native Hawaiian and Other Pacific Islander, alone or in combination with one or more other races.
- 6.1% of the district is some other race.
- 12.5% of the district is of Hispanic or Latino origin.

Congressional Districts

2, 4

Senate Districts

6, 14

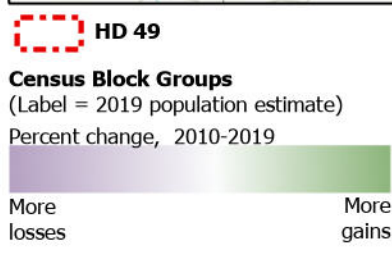
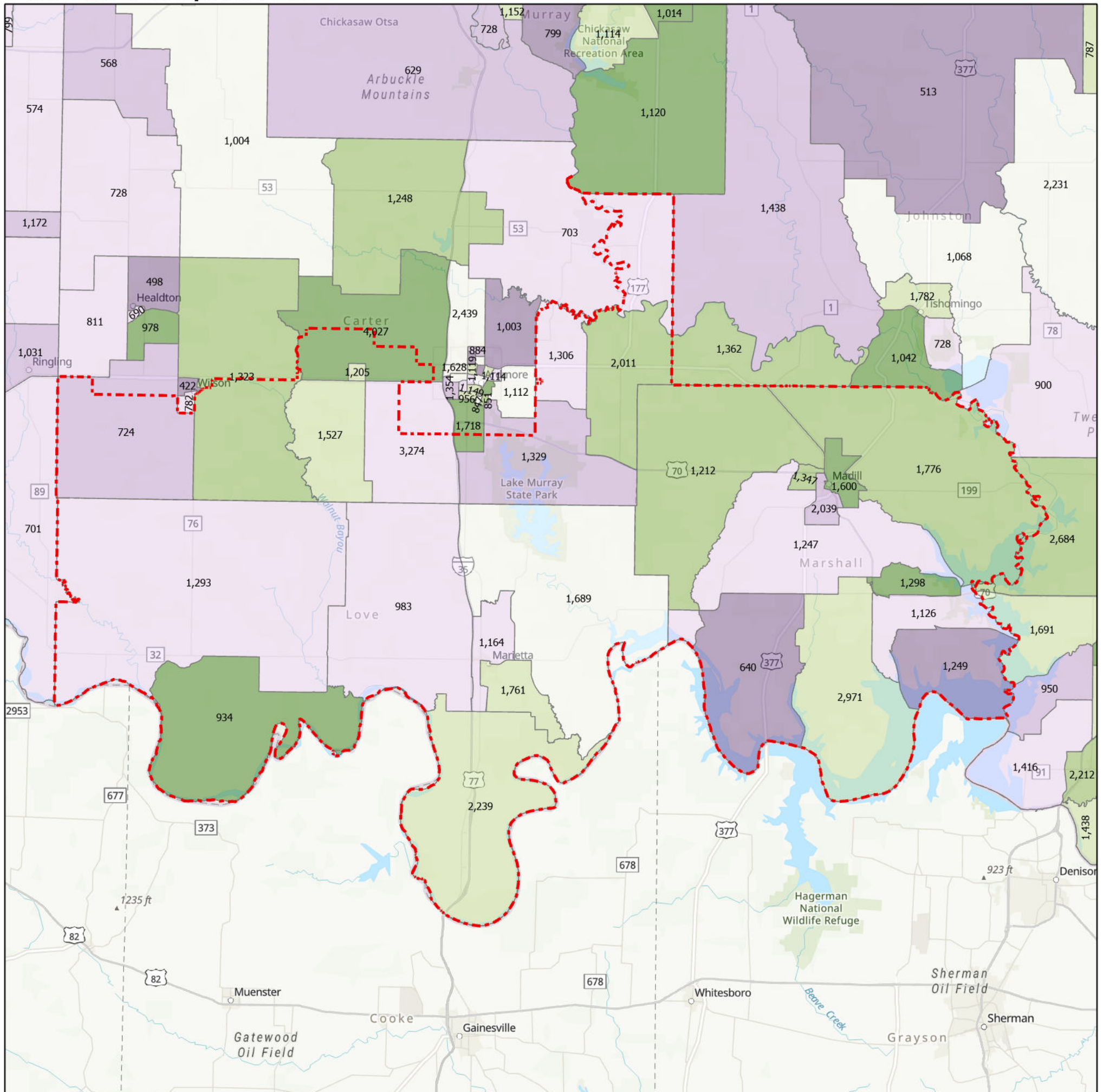
Counties

Carter, Love, Marshall

Cities

Ardmore, Dickson, Gene Autry, Kingston, Lebanon, Leon, Lone Grove, Madill, Marietta, New Woodville, Oakland, Thackerville, Wilson

Census Block Groups in HD 49



12/31/2020
Source: U.S. Census Bureau, 2015–2019 American Community Survey 5-Year Estimates. ACS data are based on a sample and are subject to sampling variability. Each estimate has a margin of error. The sum of the racial categories sometimes exceeds 100% because survey participants can select more than one racial category. Hispanic origin is of any race.

