

# House District 52 | Rep. Gerrid Kendrix

HD 52 had **37,464** people when it was redistricted in 2011. The target population at that time was **37,142** people per House District.

Now it has an estimated **35,491** people, according to the latest numbers from the American Community Survey, a program of the U.S. Census Bureau.

The current estimate is **-3,448** away from the estimated district target of **38,939** people, which is determined by dividing our estimated statewide population (3,932,870) by the 101 House Districts.

The district's population has changed an estimated **-5.27%** between 2010 and now.

- 79.7% of the district is White, alone or in combination with one or more other races.
- 9.1% of the district is Black or African American, alone or in combination with one or more other races.
- 4.7% of the district is American Indian and Alaskan Native, alone or in combination with one or more other races.
- 1.4% of the district is Asian, alone or in combination with one or more other races.
- 0.2% of the district is Native Hawaiian and Other Pacific Islander, alone or in combination with one or more other races.
- 12.3% of the district is some other race.
- 21.8% of the district is of Hispanic or Latino origin.

## Congressional Districts

3

## Senate Districts

38

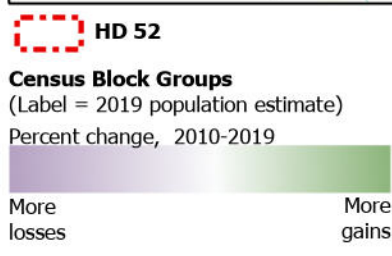
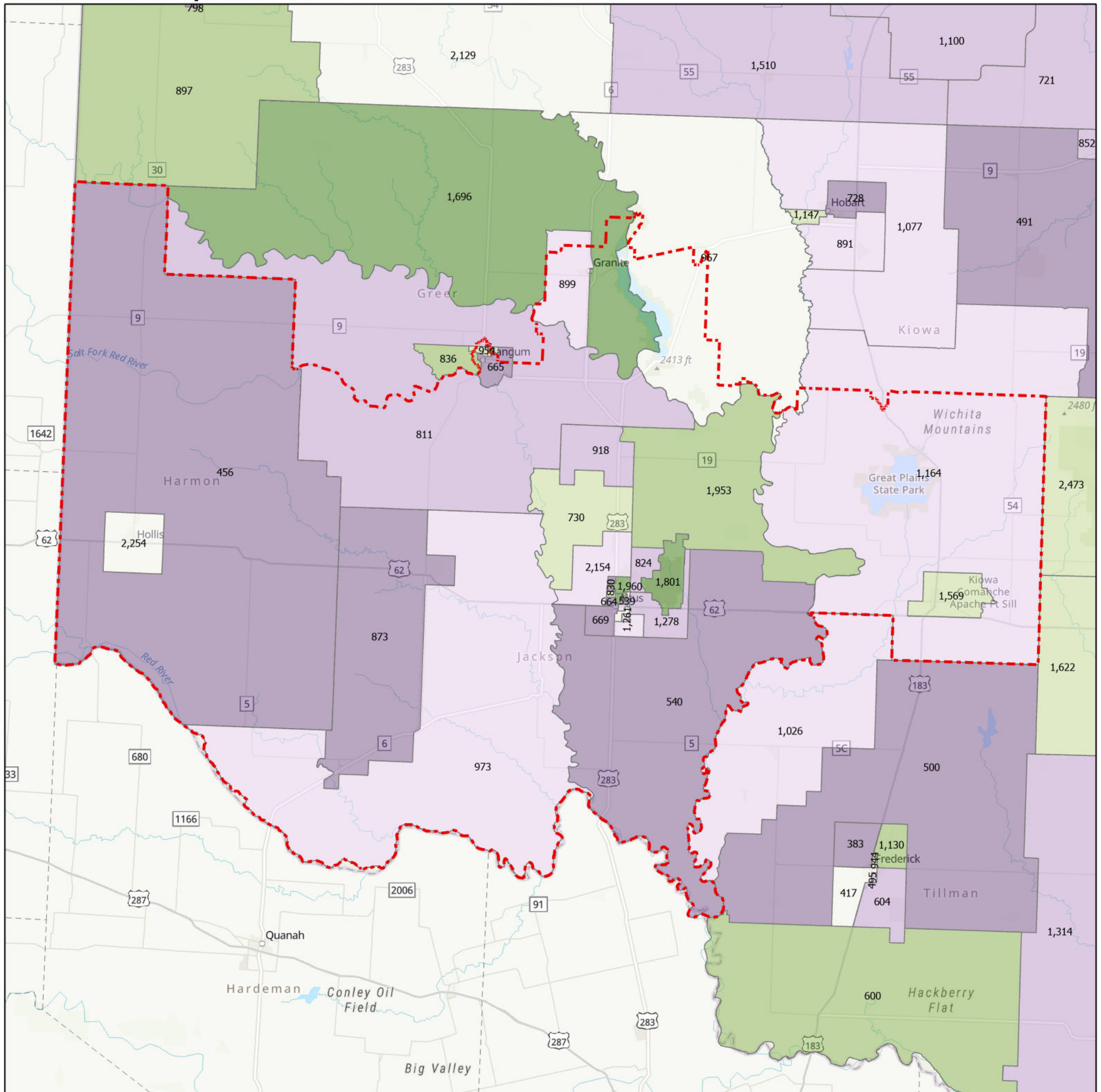
## Counties

Greer, Harmon, Jackson, Kiowa

## Cities

Altus, Blair, East Duke, Eldorado, Elmer, Friendship, Gould, Granite, Headrick, Hollis, Lone Wolf, Mangum, Martha, Mountain Park, Olustee, Snyder

## Census Block Groups in HD 52



12/31/2020  
Source: U.S. Census Bureau, 2015–2019 American Community Survey 5-Year Estimates. ACS data are based on a sample and are subject to sampling variability. Each estimate has a margin of error. The sum of the racial categories sometimes exceeds 100% because survey participants can select more than one racial category. Hispanic origin is of any race.

