

# House District 65 | Rep. Toni Hasenbeck

HD 65 had **37,102** people when it was redistricted in 2011. The target population at that time was **37,142** people per House District.

Now it has an estimated **37,617** people, according to the latest numbers from the American Community Survey, a program of the U.S. Census Bureau.

The current estimate is **-1,322** away from the estimated district target of **38,939** people, which is determined by dividing our estimated statewide population (3,932,870) by the 101 House Districts.

The district's population has changed an estimated **1.39%** between 2010 and now.

82.4% of the district is White, alone or in combination with one or more other races.  
8.8% of the district is Black or African American, alone or in combination with one or more other races.

10.1% of the district is American Indian and Alaskan Native, alone or in combination with one or more other races.

2.4% of the district is Asian, alone or in combination with one or more other races.

0.9% of the district is Native Hawaiian and Other Pacific Islander, alone or in combination with one or more other races.

1.8% of the district is some other race.

9.2% of the district is of Hispanic or Latino origin.

## Congressional Districts

3, 4

## Senate Districts

26, 31, 32, 43

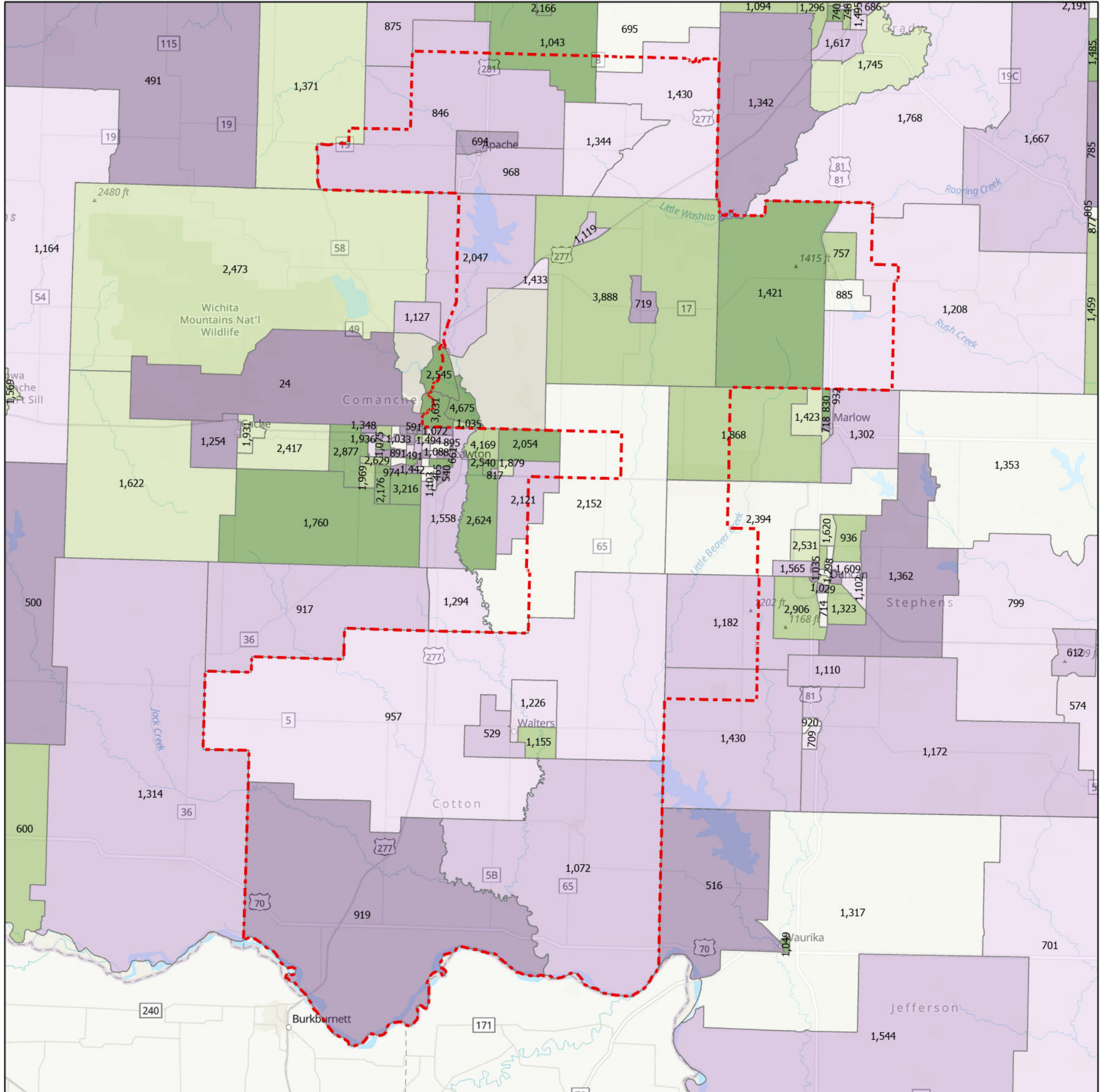
## Counties

Caddo, Comanche, Cotton, Grady, Stephens

## Cities

Apache, Cement, Central High, Comanche, Cyril, Devol, Duncan, Elgin, Empire City, Fletcher, Lawton, Randlett, Rush Springs, Sterling, Temple, Walters

## Census Block Groups in HD 65



**HD 65**  
Census Block Groups  
(Label = 2019 population estimate)  
Percent change, 2010-2019



12/31/2020  
Source: U.S. Census Bureau, 2015–2019 American Community Survey 5-Year Estimates. ACS data are based on a sample and are subject to sampling variability. Each estimate has a margin of error. The sum of the racial categories sometimes exceeds 100% because survey participants can select more than one racial category. Hispanic origin is of any race.

