

House District 67 | Rep. Jeff Boatman

HD 67 had **36,954** people when it was redistricted in 2011. The target population at that time was **37,142** people per House District.

Now it has an estimated **38,851** people, according to the latest numbers from the American Community Survey, a program of the U.S. Census Bureau.

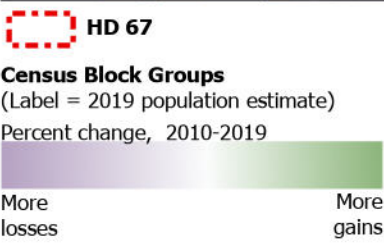
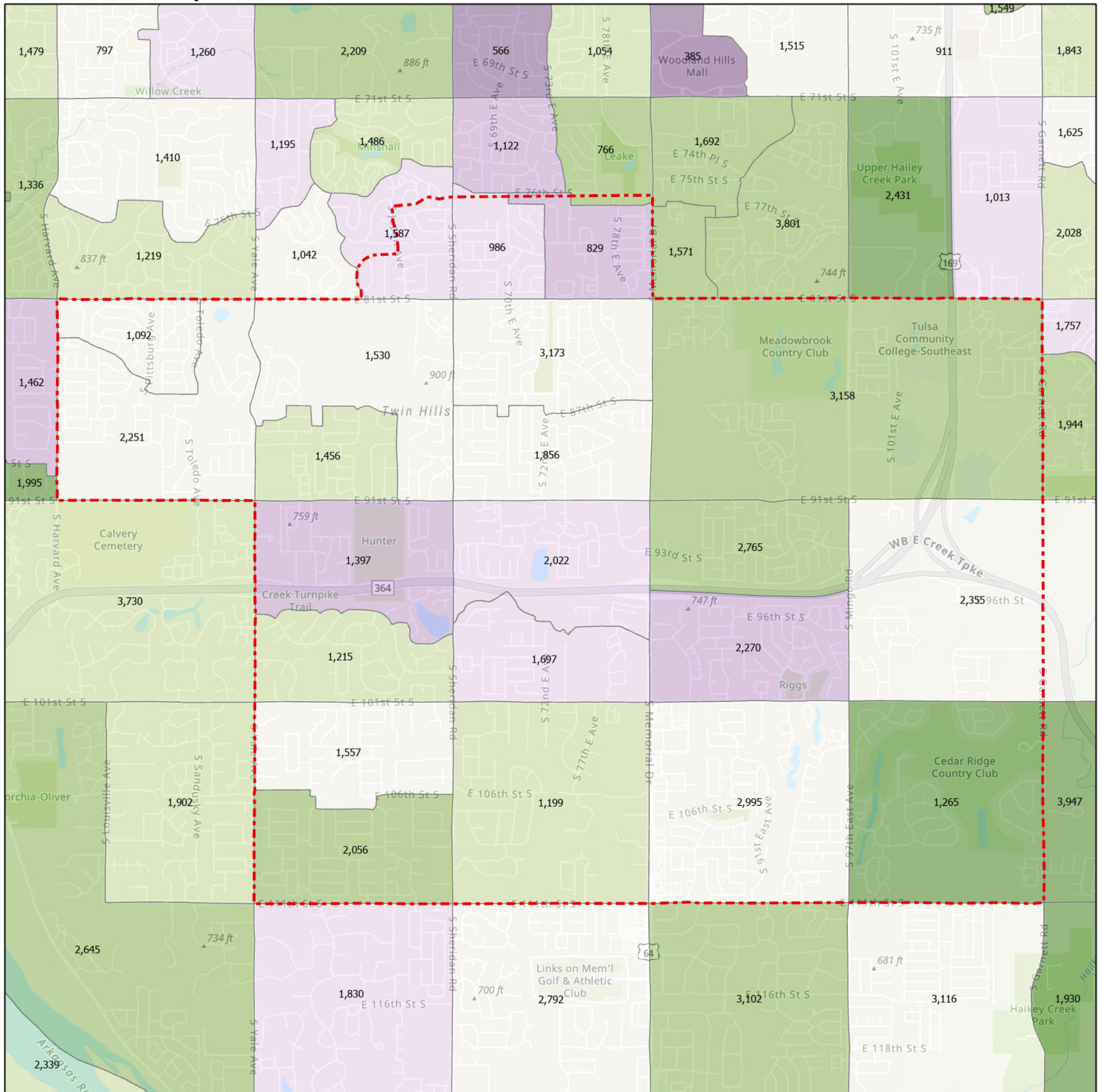
The current estimate is **-88** away from the estimated district target of **38,939** people, which is determined by dividing our estimated statewide population (3,932,870) by the 101 House Districts.

The district's population has changed an estimated **5.13%** between 2010 and now.

- 86.1% of the district is White, alone or in combination with one or more other races.
- 5.7% of the district is Black or African American, alone or in combination with one or more other races.
- 6.5% of the district is American Indian and Alaskan Native, alone or in combination with one or more other races.
- 5.9% of the district is Asian, alone or in combination with one or more other races.
- 0% of the district is Native Hawaiian and Other Pacific Islander, alone or in combination with one or more other races.
- 1.2% of the district is some other race.
- 5.4% of the district is of Hispanic or Latino origin.

Congressional Districts
1
Senate Districts
25, 35, 39
Counties
Tulsa
Cities
Bixby, Broken Arrow, Tulsa

Census Block Groups in HD 67



12/31/2020
Source: U.S. Census Bureau, 2015–2019 American Community Survey 5-Year Estimates. ACS data are based on a sample and are subject to sampling variability. Each estimate has a margin of error. The sum of the racial categories sometimes exceeds 100% because survey participants can select more than one racial category. Hispanic origin is of any race.

