

House District 72 | Rep. Monroe Nichols

HD 72 had **37,268** people when it was redistricted in 2011. The target population at that time was **37,142** people per House District.

Now it has an estimated **35,635** people, according to the latest numbers from the American Community Survey, a program of the U.S. Census Bureau.

The current estimate is **-3,304** away from the estimated district target of **38,939** people, which is determined by dividing our estimated statewide population (3,932,870) by the 101 House Districts.

The district's population has changed an estimated **-4.38%** between 2010 and now.

- 55.9% of the district is White, alone or in combination with one or more other races.
- 26.5% of the district is Black or African American, alone or in combination with one or more other races.
- 11.8% of the district is American Indian and Alaskan Native, alone or in combination with one or more other races.
- 2.1% of the district is Asian, alone or in combination with one or more other races.
- 0.3% of the district is Native Hawaiian and Other Pacific Islander, alone or in combination with one or more other races.
- 13% of the district is some other race.
- 23.3% of the district is of Hispanic or Latino origin.

Congressional Districts

1

Senate Districts

11, 34, 35

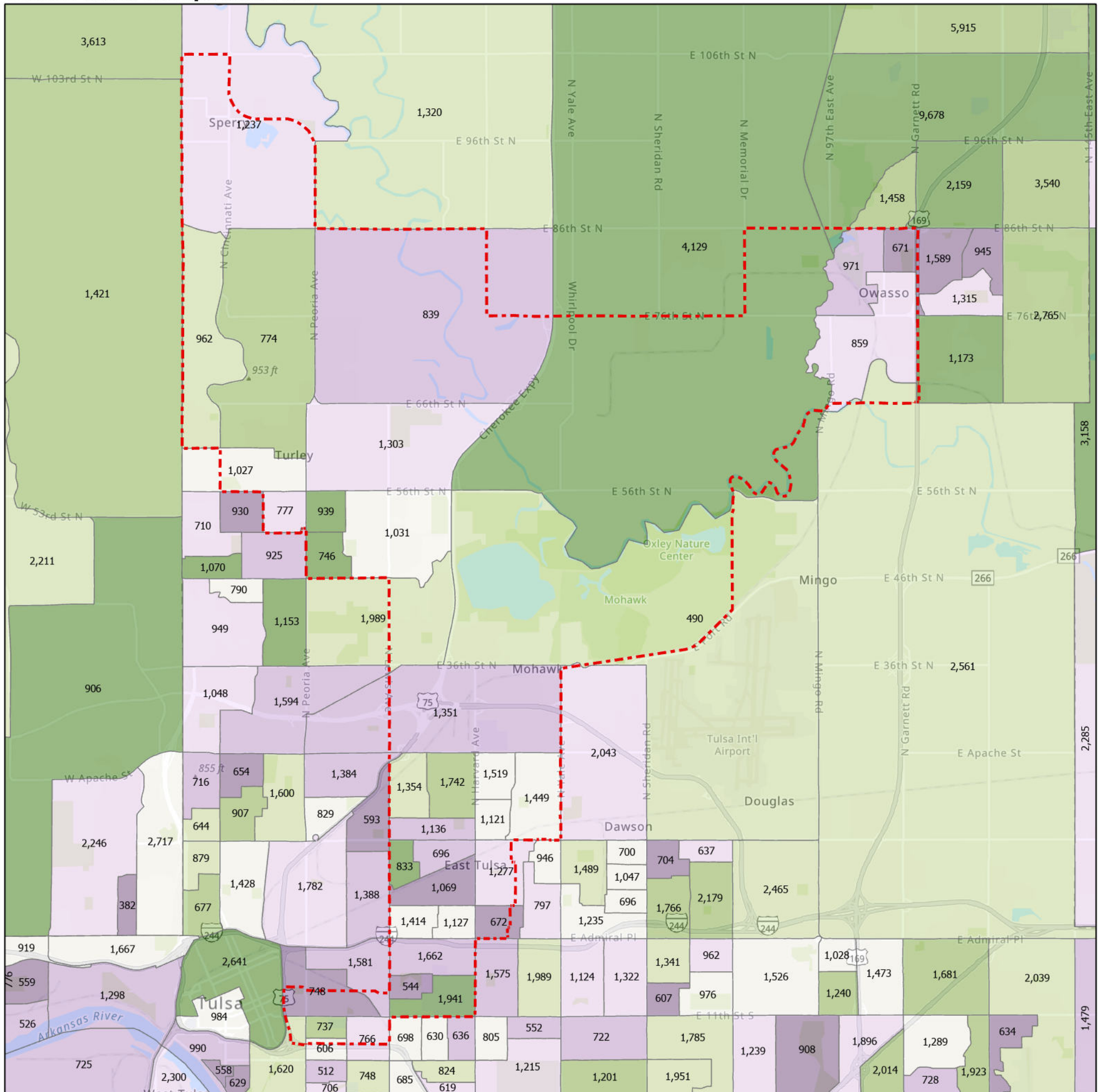
Counties

Tulsa

Cities

Owasso, Sperry, Tulsa, Turley

Census Block Groups in HD 72



HD 72

Census Block Groups

(Label = 2019 population estimate)

Percent change, 2010-2019



More losses

More gains

12/31/2020

Source: U.S. Census Bureau, 2015–2019 American Community Survey 5-Year Estimates. ACS data are based on a sample and are subject to sampling variability. Each estimate has a margin of error. The sum of the racial categories sometimes exceeds 100% because survey participants can select more than one racial category. Hispanic origin is of any race.

