

House District 74 | Rep. Mark Vancuren

HD 74 had **37,228** people when it was redistricted in 2011. The target population at that time was **37,142** people per House District.

Now it has an estimated **44,197** people, according to the latest numbers from the American Community Survey, a program of the U.S. Census Bureau.

The current estimate is **5,258** away from the estimated district target of **38,939** people, which is determined by dividing our estimated statewide population (3,932,870) by the 101 House Districts.

The district's population has changed an estimated **18.72%** between 2010 and now.

87.2% of the district is White, alone or in combination with one or more other races.
3.5% of the district is Black or African American, alone or in combination with one or more other races.

12.1% of the district is American Indian and Alaskan Native, alone or in combination with one or more other races.

3% of the district is Asian, alone or in combination with one or more other races.

0.1% of the district is Native Hawaiian and Other Pacific Islander, alone or in combination with one or more other races.

2% of the district is some other race.

5.8% of the district is of Hispanic or Latino origin.

Congressional Districts

1, 2

Senate Districts

2, 34

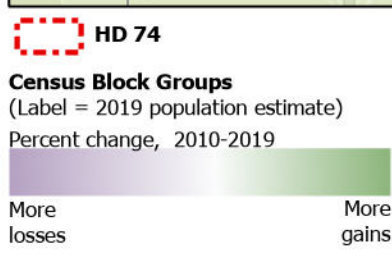
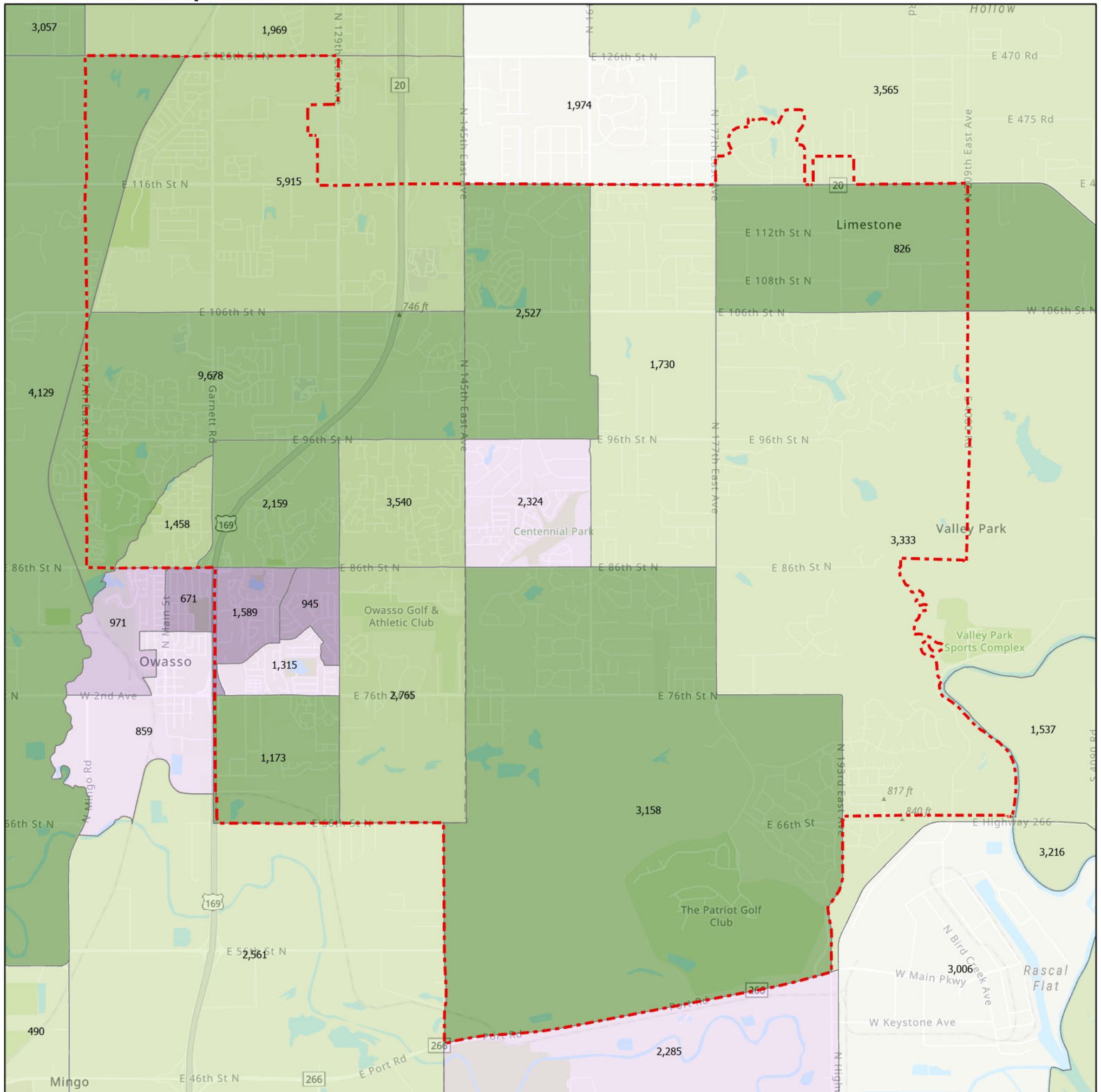
Counties

Rogers, Tulsa

Cities

Limestone, Owasso, Tulsa, Valley Park

Census Block Groups in HD 74



12/31/2020
Source: U.S. Census Bureau, 2015–2019 American Community Survey 5-Year Estimates. ACS data are based on a sample and are subject to sampling variability. Each estimate has a margin of error. The sum of the racial categories sometimes exceeds 100% because survey participants can select more than one racial category. Hispanic origin is of any race.

