

House District 77 | Rep. John Waldron

HD 77 had **36,869** people when it was redistricted in 2011. The target population at that time was **37,142** people per House District.

Now it has an estimated **37,855** people, according to the latest numbers from the American Community Survey, a program of the U.S. Census Bureau.

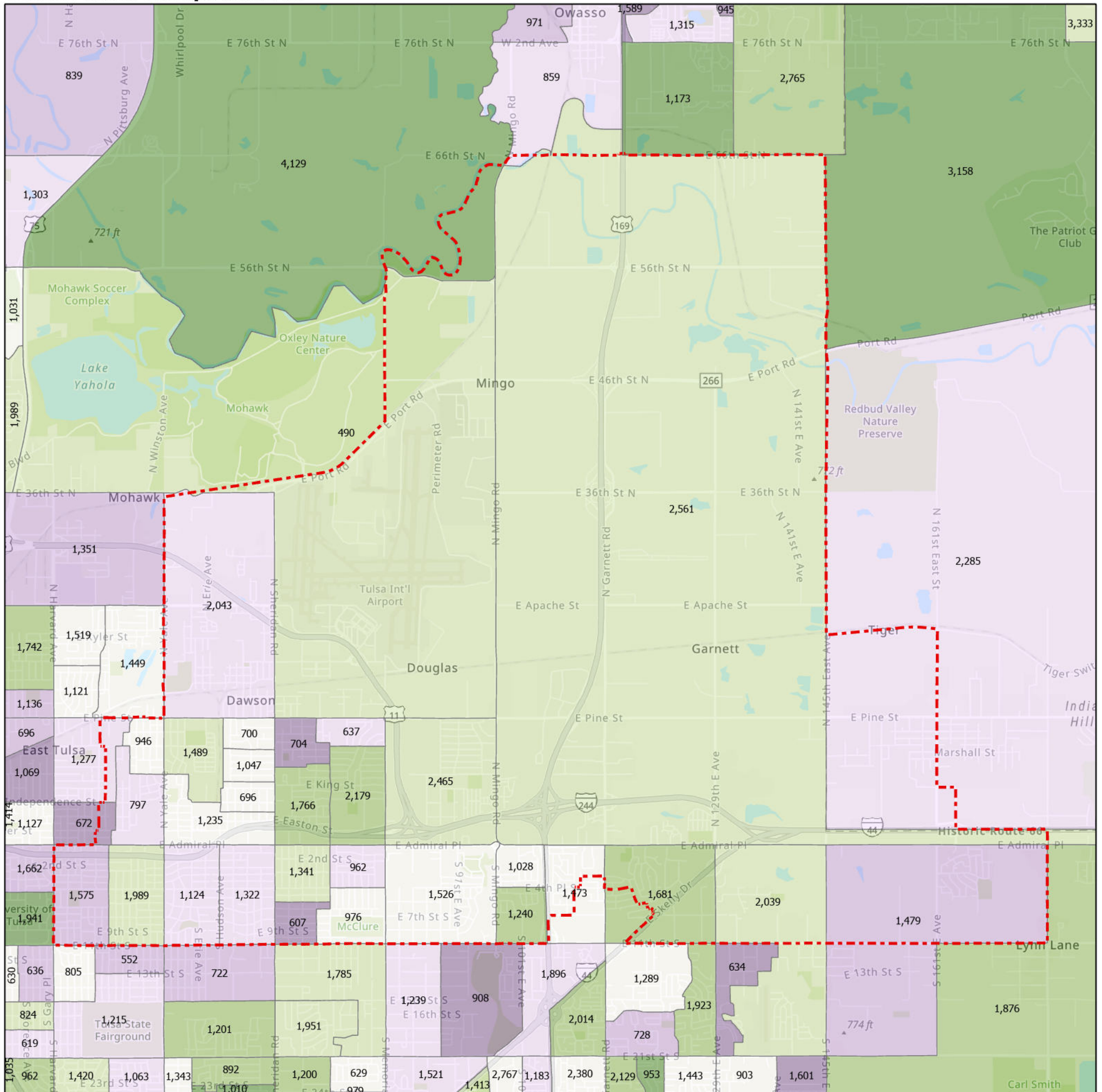
The current estimate is **-1,084** away from the estimated district target of **38,939** people, which is determined by dividing our estimated statewide population (3,932,870) by the 101 House Districts.

The district's population has changed an estimated **2.67%** between 2010 and now.

- 72.5% of the district is White, alone or in combination with one or more other races.
- 13.3% of the district is Black or African American, alone or in combination with one or more other races.
- 12.7% of the district is American Indian and Alaskan Native, alone or in combination with one or more other races.
- 1.8% of the district is Asian, alone or in combination with one or more other races.
- 0.2% of the district is Native Hawaiian and Other Pacific Islander, alone or in combination with one or more other races.
- 9.7% of the district is some other race.
- 29.1% of the district is of Hispanic or Latino origin.

- Congressional Districts
- 1
- Senate Districts
- 2, 11, 34, 35, 39
- Counties
- Rogers, Tulsa
- Cities
- Catoosa, Owasso, Tulsa

Census Block Groups in HD 77



HD 77

Census Block Groups
(Label = 2019 population estimate)

Percent change, 2010-2019

More losses More gains

12/31/2020
Source: U.S. Census Bureau, 2015–2019 American Community Survey 5-Year Estimates. ACS data are based on a sample and are subject to sampling variability. Each estimate has a margin of error. The sum of the racial categories sometimes exceeds 100% because survey participants can select more than one racial category. Hispanic origin is of any race.

