

# House District 90 | Rep. Jon Echols

HD 90 had **37,173** people when it was redistricted in 2011. The target population at that time was **37,142** people per House District.

Now it has an estimated **44,030** people, according to the latest numbers from the American Community Survey, a program of the U.S. Census Bureau.

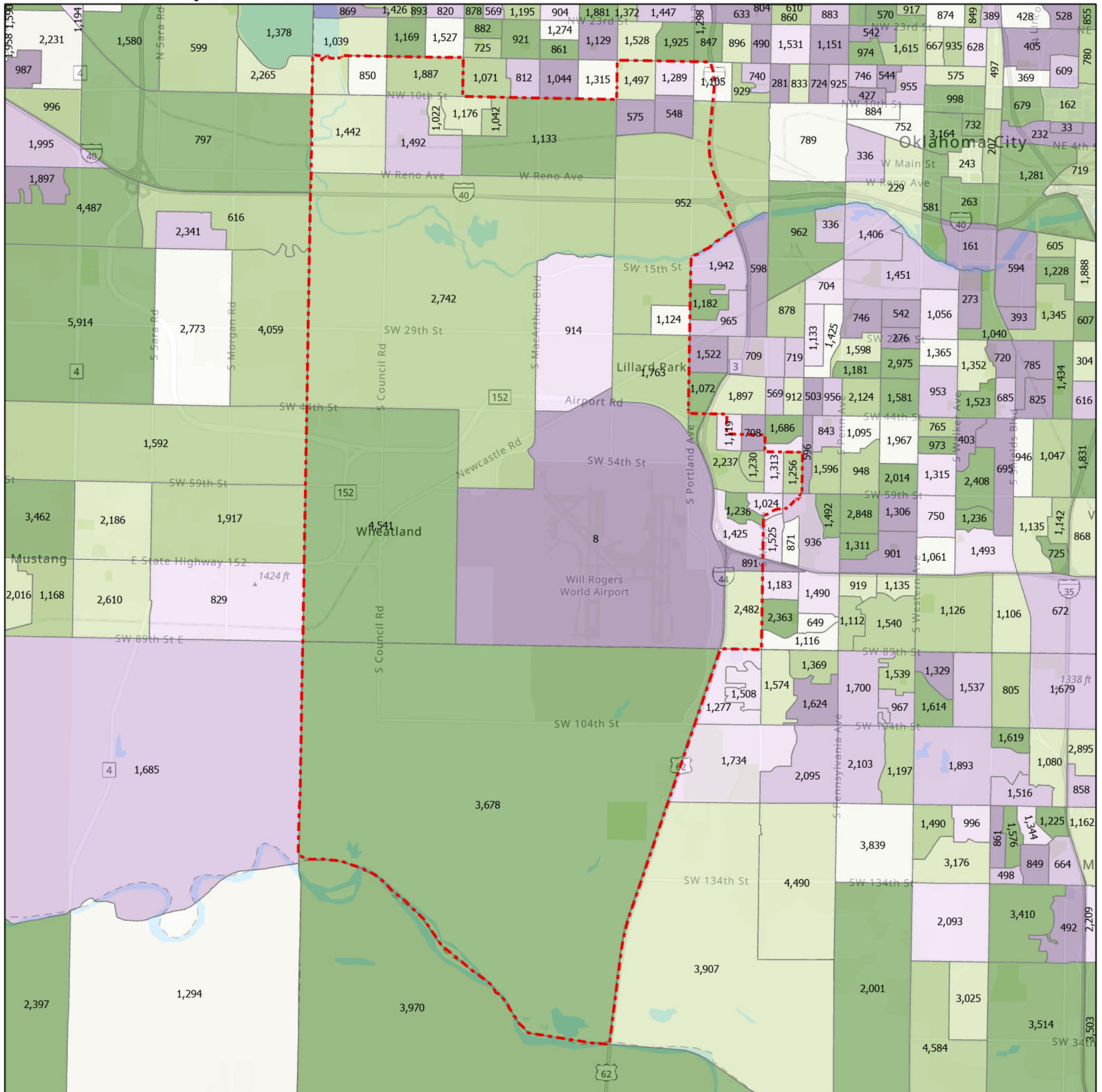
The current estimate is **5,091** away from the estimated district target of **38,939** people, which is determined by dividing our estimated statewide population (3,932,870) by the 101 House Districts.

The district's population has changed an estimated **18.45%** between 2010 and now.

- 76.5% of the district is White, alone or in combination with one or more other races.
- 13.4% of the district is Black or African American, alone or in combination with one or more other races.
- 7.8% of the district is American Indian and Alaskan Native, alone or in combination with one or more other races.
- 4.8% of the district is Asian, alone or in combination with one or more other races.
- 0.8% of the district is Native Hawaiian and Other Pacific Islander, alone or in combination with one or more other races.
- 6.6% of the district is some other race.
- 30.9% of the district is of Hispanic or Latino origin.

- Congressional Districts  
4, 5
- Senate Districts  
30, 44, 45, 46
- Counties  
Cleveland, Oklahoma
- Cities  
Oklahoma City

## Census Block Groups in HD 90



**HD 90**

**Census Block Groups**  
(Label = 2019 population estimate)

Percent change, 2010-2019

More losses  More gains

12/31/2020  
Source: U.S. Census Bureau, 2015–2019 American Community Survey 5-Year Estimates. ACS data are based on a sample and are subject to sampling variability. Each estimate has a margin of error. The sum of the racial categories sometimes exceeds 100% because survey participants can select more than one racial category. Hispanic origin is of any race.

