

# House District 91 | Rep. Chris Kannady

**HD 91** had **37,169** people when it was redistricted in 2011. The target population at that time was **37,142** people per House District.

Now it has an estimated **37,361** people, according to the latest numbers from the American Community Survey, a program of the U.S. Census Bureau.

The current estimate is **-1,578** away from the estimated district target of **38,939** people, which is determined by dividing our estimated statewide population (3,932,870) by the 101 House Districts.

The district's population has changed an estimated **0.52%** between 2010 and now.

- 81.2% of the district is White, alone or in combination with one or more other races.
- 4.6% of the district is Black or African American, alone or in combination with one or more other races.
- 7.1% of the district is American Indian and Alaskan Native, alone or in combination with one or more other races.
- 11.2% of the district is Asian, alone or in combination with one or more other races.
- 0.1% of the district is Native Hawaiian and Other Pacific Islander, alone or in combination with one or more other races.
- 1.8% of the district is some other race.
- 9.3% of the district is of Hispanic or Latino origin.

## Congressional Districts

4

## Senate Districts

24, 45

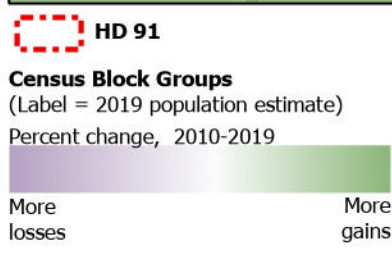
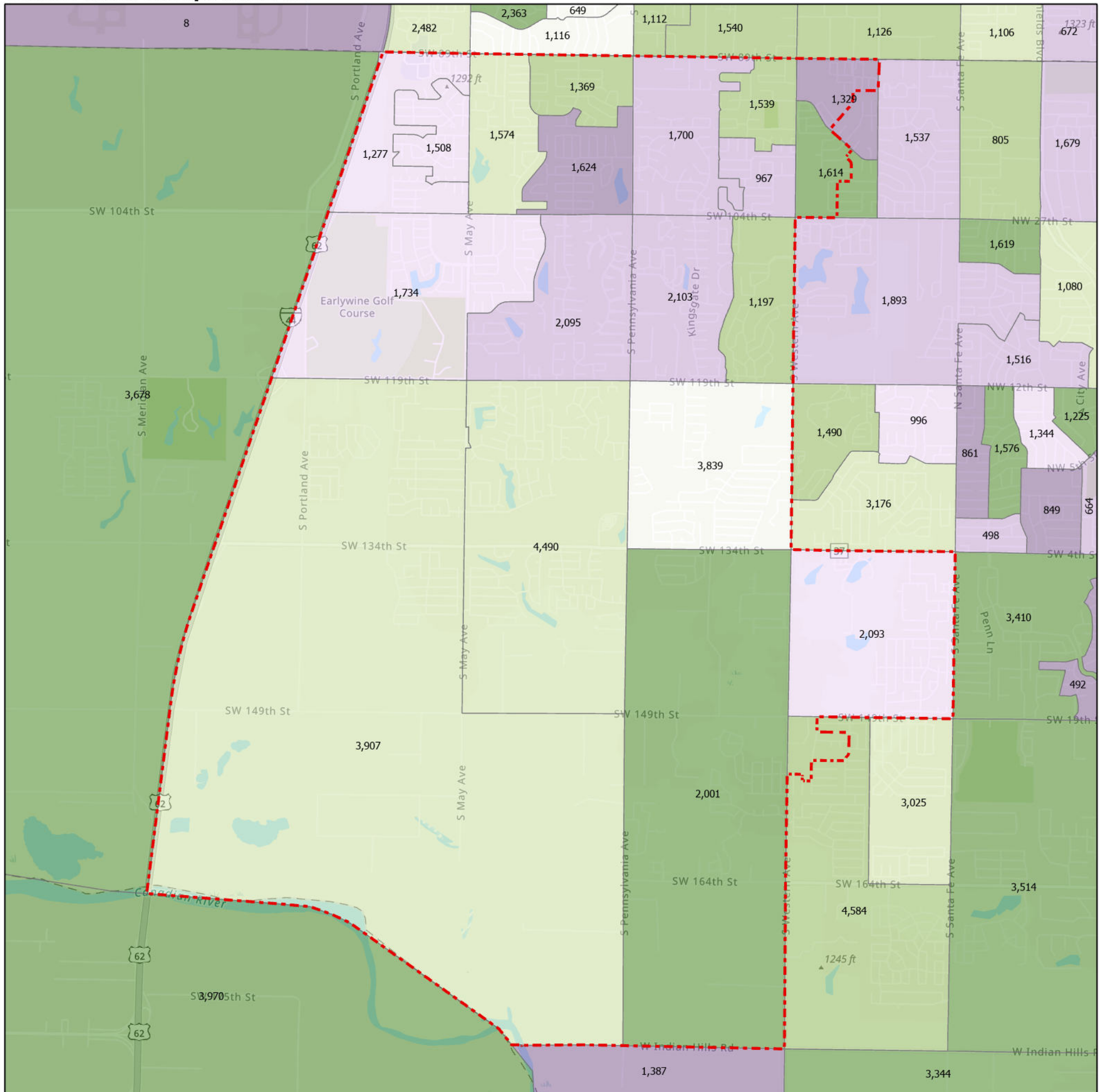
## Counties

Cleveland

## Cities

Oklahoma City

## Census Block Groups in HD 91



12/31/2020  
Source: U.S. Census Bureau, 2015–2019 American Community Survey 5-Year Estimates. ACS data are based on a sample and are subject to sampling variability. Each estimate has a margin of error. The sum of the racial categories sometimes exceeds 100% because survey participants can select more than one racial category. Hispanic origin is of any race.

